



# Stormwater Management



Infiltration  
Attenuation  
Filter and shaft systems

# Water is our element

Photo copyright: stock.adobe.com: © malp

## Solutions to your challenges

GRAF offers an extensive range of products for water resource management. At GRAF, global challenges such as water protection meet the brand quality of "Made In Germany". We provide the solutions to your challenges.

## Global network of sales partners and production facilities!

Sales partners in more than 80 countries help us develop solutions suited to local markets and deliver the customer support needed locally.

The manufacturing process is essential for a top-quality product. GRAF masters the production of plastic products at the highest quality level and with the most modern machines.

## Durable products, reliable investment

Right from the product development stage, GRAF attaches great importance to durable design. GRAF offers a warranty of up to 15 years for its rainwater tanks.

## Seamless quality assurance

Our products portray an image of superlative production quality and reliability. Each part is then given a serial number. The production process for each and every tank is documented throughout. All production parameters, such as weight or material batch, are recorded for quality assurance.

Our goal: your satisfaction. Hundreds of thousands of satisfied customers already benefit from the advantages of GRAF rainwater harvesting systems.



Manufacturing certified according to ISO 9001 and 50001

## Fast responses, even when special solutions are needed

Our products are exported around the globe. Intelligent logistics and sufficient stock levels ensure first-class availability of standard solutions, as well as for customised rainwater solutions.



## FOR A GREENER PLANET

Find out what GRAF does in the field of recycling and energy-efficient manufacturing

>> page 60/61

# Content

## Infiltration



EcoBloc Inspect flex  
EcoBloc maxx / light

10  
16



Rain Bloc compact 300  
Infiltration Tunnel / twin

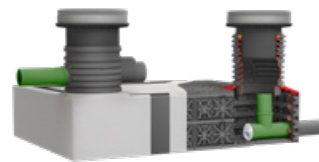
22  
24



XFlow 50-L  
XFlow 50-S

30

## Attenuation



Overview  
Attenuation with EcoBloc  
Detention and retention cisterns  
Outflow regulators

36  
38  
40  
42

## Filter and shaft systems



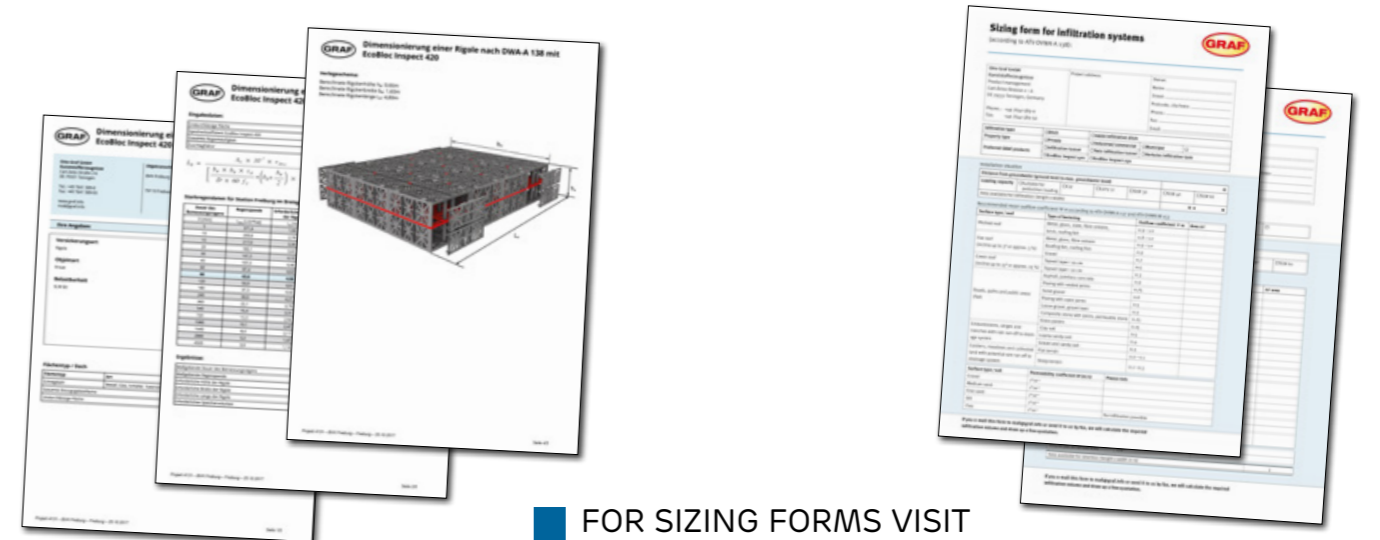
Overview  
Vario 800 flex shaft  
External shaft and filter systems  
EcoPure rainwater treatment  
Shaft accessories

46  
48  
50  
56  
58

# Advice, planning and products from one source

## WHAT WE OFFER:

- Sizing for infiltration / retention systems
- Dimensioning according to national standards and guidelines
- Assistance with drainage planning proposals
- Assistance and evaluation of site conditions
- Shop drawings for each tank BIM / REVIT data for our products
- Local partners for direct contacts
- Product experts to support your individual projects



FOR SIZING FORMS VISIT  
>> [www.graf.info](http://www.graf.info)

## On-site support:

If you are planning an infiltration system and need on-site assistance or one-to-one advice from our technical team, then we can help. We work with you to develop customised systems to clean, store, infiltrate, attenuate or harvest rainwater.



Foto-Urheberrechte: © MUSTFotografia

Enter Webcode in search field

**Q** **WEBCODE** G4107

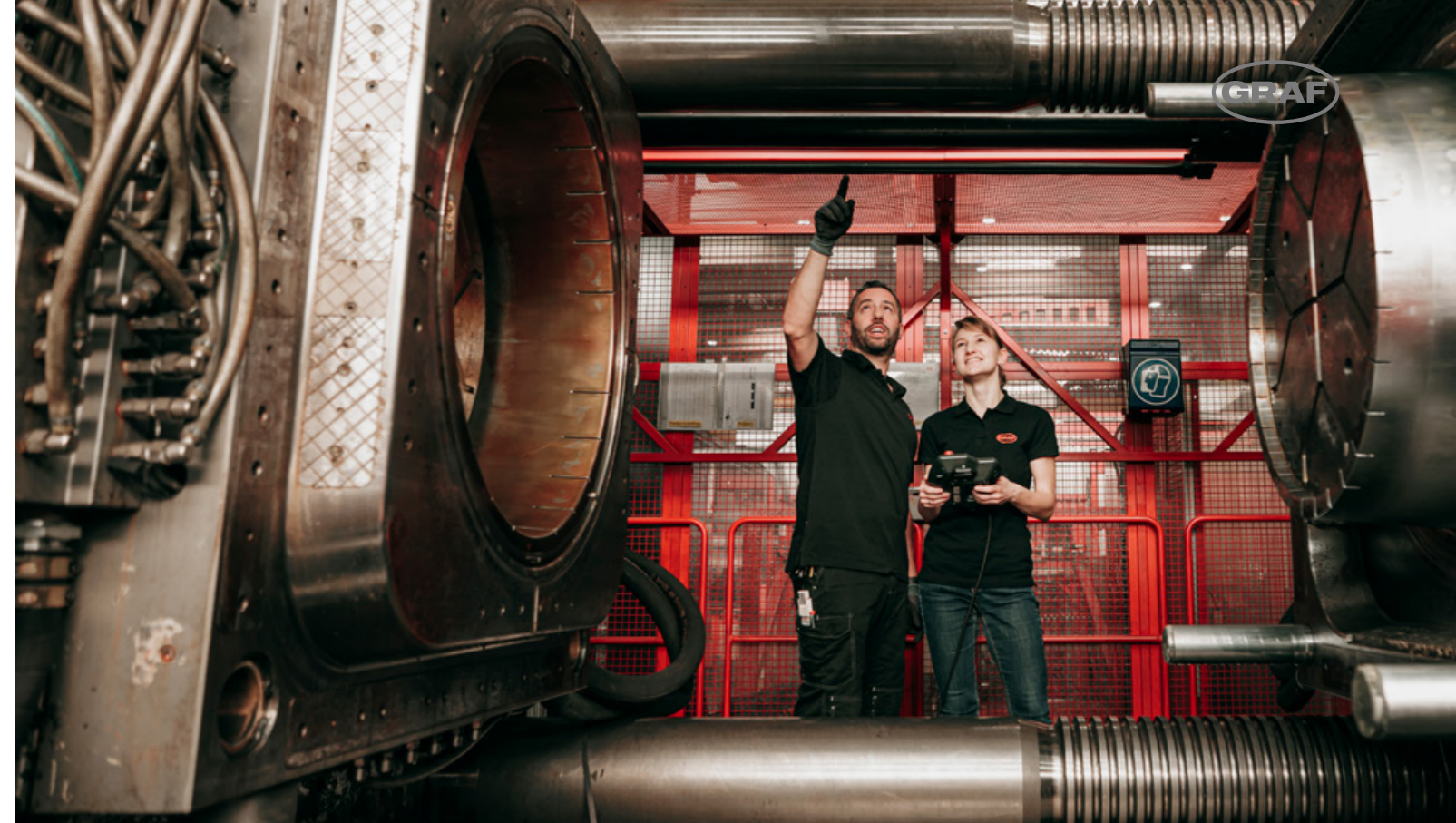
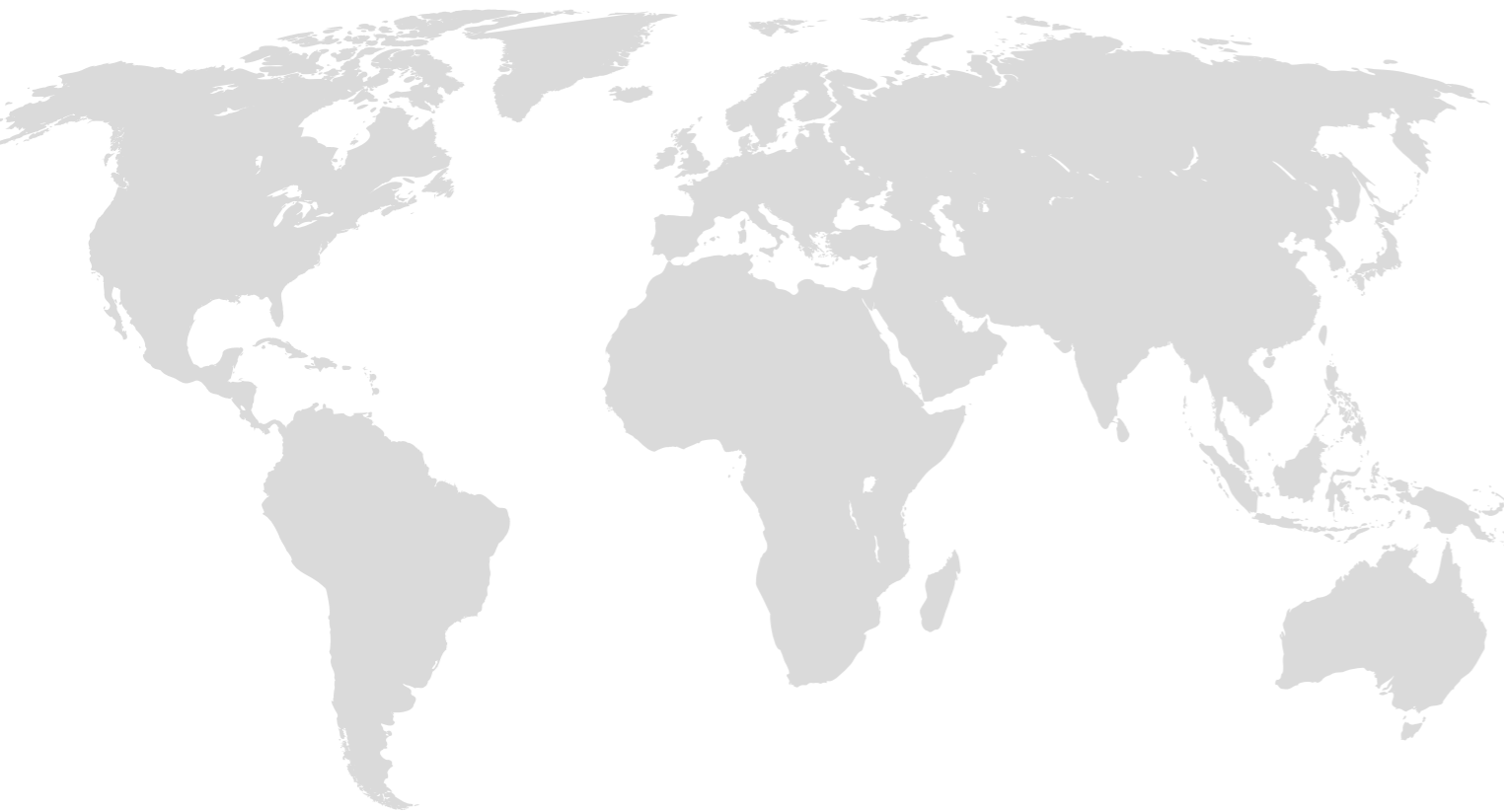
- Installation instructions
- Detailed product information
- Downloads
- Tender offer

[www.graf.info](http://www.graf.info)

## Symbols in the catalogue

- Suitable for pedestrian loading
- Suitable for vehicle loading
- Lorry-bearing
- Stackable
- Inspectable
- High pressure flushable

Exports to over 80 countries



## High Quality Manufacturing

Our products have to satisfy a huge number of different requirements, which is why GRAF is an expert in all the common procedures for manufacturing plastic products and has access to the optimum manufacturing process for every product.

GRAF products are exported to more than 80 countries around the world. The Graf Group has its own national companies in

strategically important markets. We already generate more than 50 % of our revenue outside of Germany – with this figure set to

rise in the future. The share of our company's exports in relation to our total products has almost doubled in the past five years.

” GRAF GENERATES OVER 50 % OF ITS REVENUE OUTSIDE OF GERMANY – WITH THIS FIGURE SET TO RISE IN THE FUTURE. “

### Ecological products from the technology leader

GRAF uses state-of-the-art production facilities. This is the only way to guarantee superlative quality at attractive prices. GRAF broke new ground by using injection embossing to make the Carat underground tank. To manufacture this tank, the company developed and constructed the world's largest injection moulding machine.

### Durable and 100 % recyclable

Right from the stage of developing its products, GRAF attaches great importance to sustainable product design. Long product lives ensure that fewer resources are used and the environmental impact is minimised. All products manufactured by GRAF are 100 % recyclable.

Some products are also made from recycled materials – yet another boost to the environmental credentials of the GRAF product range. This means that not only do GRAF products protect the environment during use but their manufacturing process is also ecologically sound.

"More than 25 years of experience in stormwater management."



GRAF Australia



GRAF UK



GRAF Poland

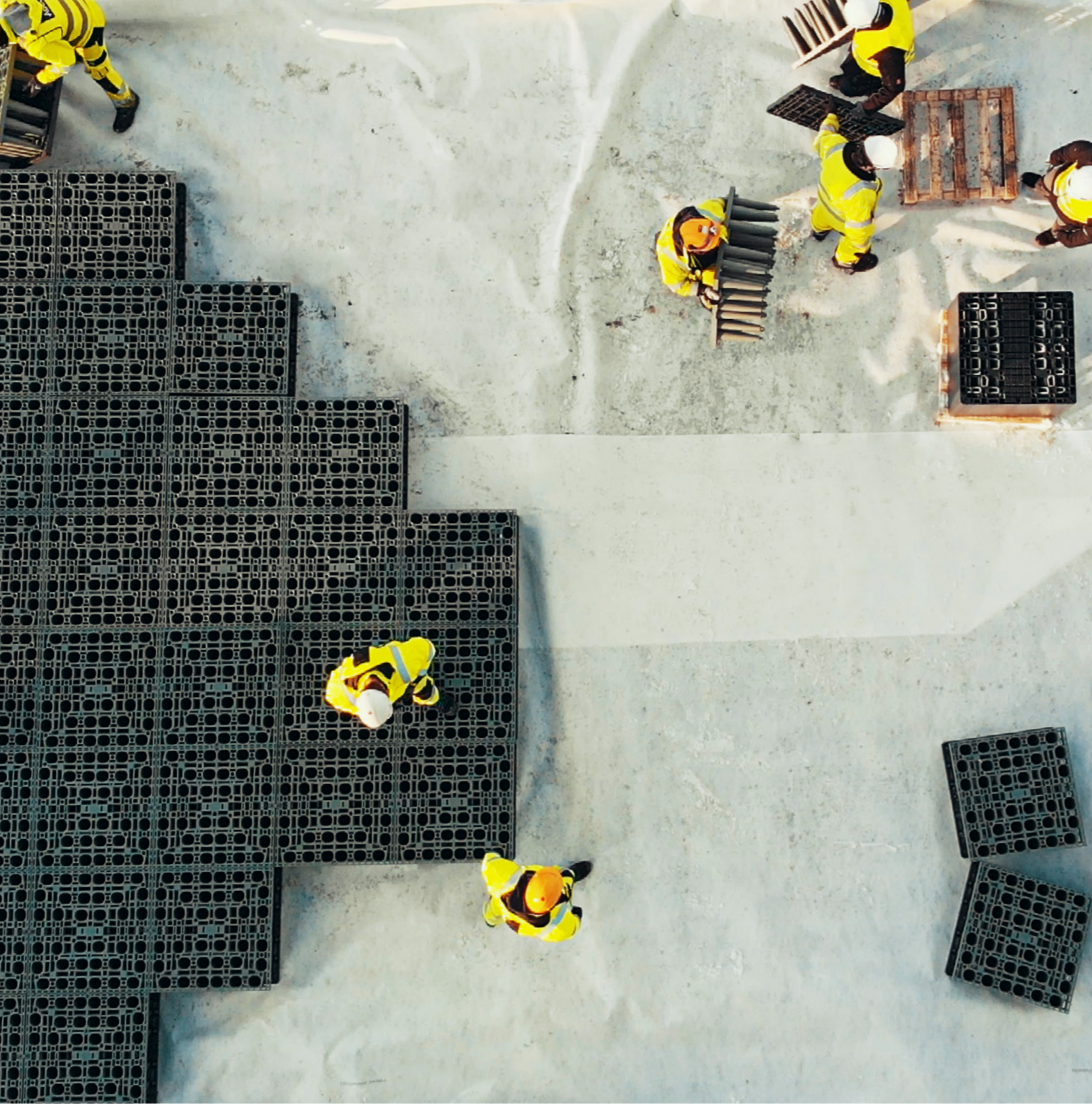


GRAF Iberica



Manufacturing certified according to ISO 9001 and 50001





# Infiltration

- > EcoBloc Inspect flex
- > EcoBloc maxx / light
- > Rain Bloc compact 300
- > Infiltration Tunnel / twin
- > XFlow 50-L / XFlow 50-S

Page 10

Page 16

Page 22

Page 24

Page 30

# EcoBloc Inspect flex



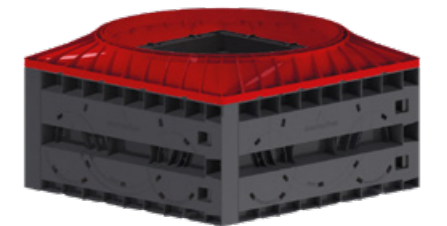
The EcoBloc Inspect flex is produced out of 100 % recycled plastic. GRAF produces its own high quality polymers out of recycled plastic. You can find more information about it on page 60/61.

### Lorry-bearing

The EcoBloc Inspect flex has a heavy-duty lorry-bearing capacity of 60 tons with an 800 mm (2' 7.5") earth covering.

### Fully integrated shaft

The Vario 800 flex shaft system (page 48) can be directly installed in an EcoBloc infiltration / attenuation system. The connection surfaces of the inspection channels in the Vario 800 flex shaft system are accurately matched to the EcoBloc Inspect flex system.

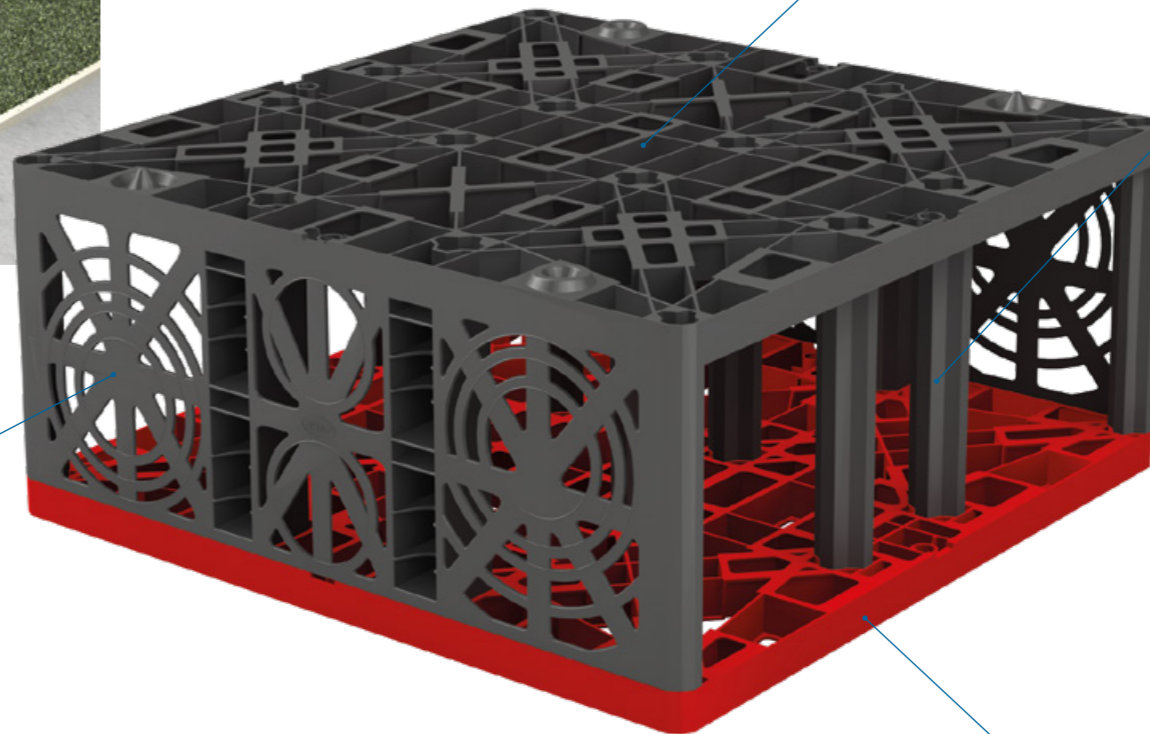


### Easy to install

The EcoBloc Inspect flex stands out for its lightweight construction, ease of handling, and minimal accessory requirements, making setup a breeze. Thanks to its self-centering design, vertical connectors are no longer necessary, further simplifying installation.

### Service life of over 50 years

A durable product design ensures sustainability. Both the EcoBloc system and the Vario 800 flex shaft system are designed to last for over 50 years, providing long-term reliability and environmental benefits.

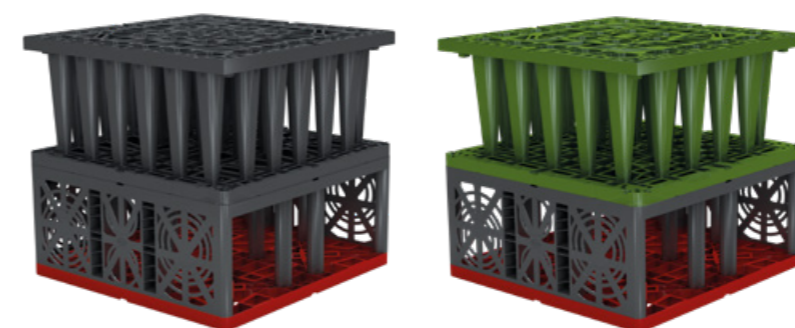


### Easy to inspect

The standard inspection channel allows the entire infiltration / attenuation system to be monitored effectively. The EcoBloc Inspect flex allows access by commercially available inspection cameras. This has been confirmed by several independent testing authorities.

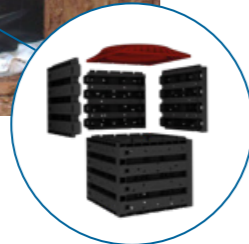
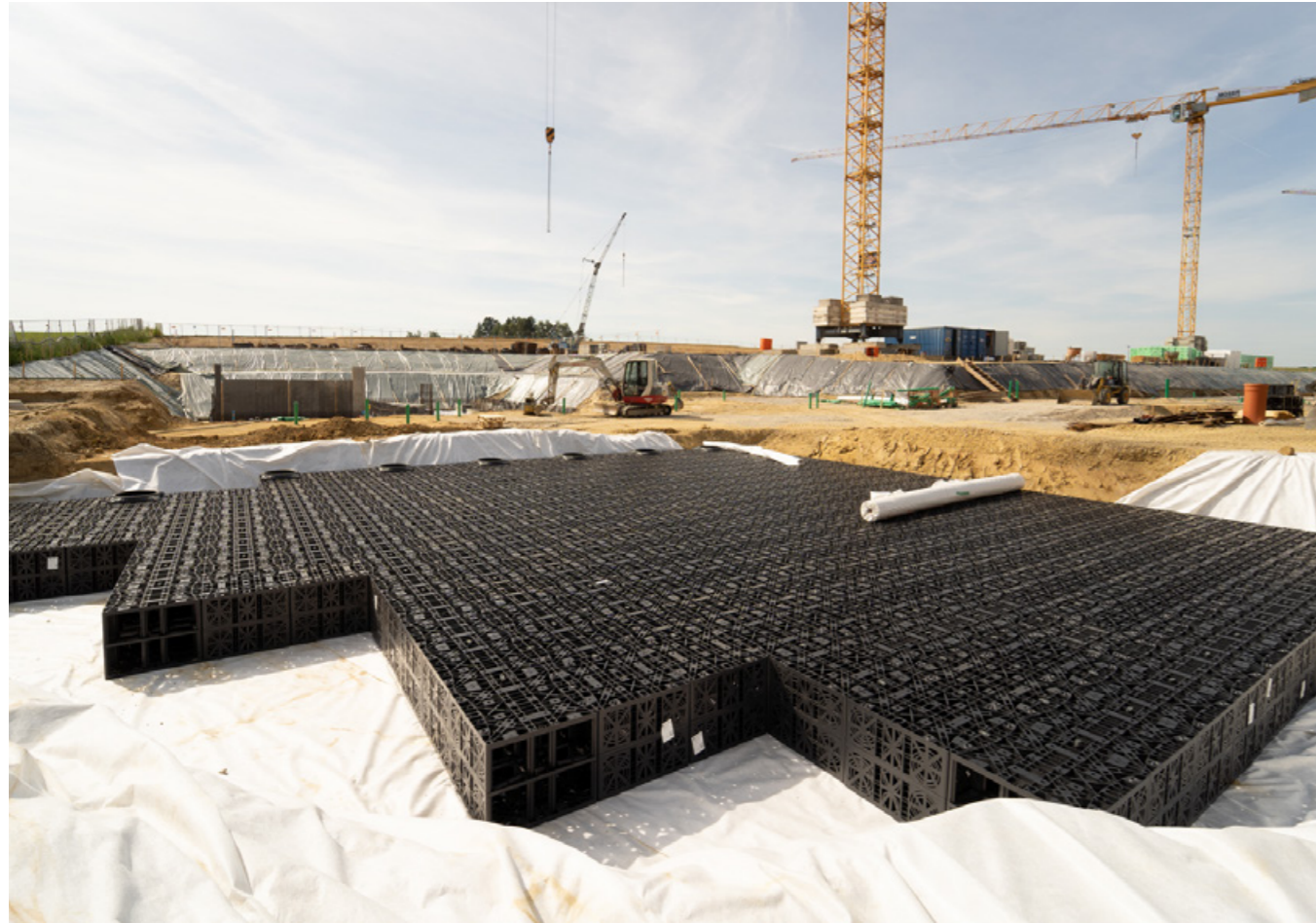
### Improved logistics

Enhanced logistic efficiency by combining it with EcoBloc maxx or EcoBloc light.



# System overview

## EcoBloc Inspect flex



### Flexible use

The Vario 800 flex shaft provides easy access to all EcoBloc modules. It can be used in many different ways:

- As an inspection shaft
- As an inlet shaft
- As a filter shaft
- As a flow control shaft

### Easy to inspect

The Vario 800 flex shaft allows easy access to the EcoBloc system by commercially available inspection cameras. This has been confirmed by several independent testing authorities.

### No additional excavation

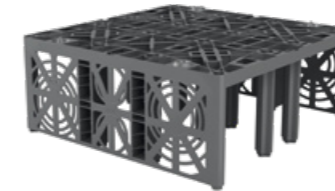
The Vario 800 flex shaft system can be directly installed in an EcoBloc infiltration or attenuation system. The connection surfaces of the inspection channels in the Vario 800 flex shaft system are accurately matched to the EcoBloc Inspect flex system.

### EcoBloc Inspect flex

- Lorry-bearing 60 tons / HS-25
- 150 m<sup>3</sup> (39,600 US gal.) / Truck
- Inspectable
- High pressure jetting possible



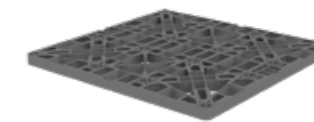
Q WEBCODE G4107



### EcoBloc Inspect flex

DN110 (4") / DN160 (6") / DN200 (8") connecting surfaces

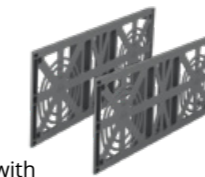
Volume [l]	Length [mm]	Width [mm]	Height [mm]	Order no.
205 (54.2 US gal.)	800 (2' 7.5")	800 (2' 7.5")	320 (12.6")	402005



### EcoBloc Inspect flex base plate

Forms the foundation of the EcoBloc Inspect flex system

Volume [l]	Length [mm]	Width [mm]	Height [mm]	Order no.
25 (6.6 US gal.)	800 (2' 7.5")	800 (2' 7.5")	40 (1.6")	402006



### EcoBloc Inspect flex end plates

The front ends of an EcoBloc Inspect flex system are sealed by end plates with DN110 (4") / DN125 (5") / DN160 (6") / DN200 (8") contact surfaces

Item	Order no.
Set (2 units)	402002

### EcoBloc System accessories

#### EcoBloc connectors

For horizontal connection



Set 10 units  
Order no. 402015

Set 25 units  
Order no. 402018

Set 200 units  
Order no. 402025

#### Deaeration end

DN 110 (4")



Order no. 369017

DN160 (6") / DN200 (8"), excl. connection pipe

Order no. 369046

#### EcoBloc adaptor plate

Connection dimensions up to DN630 can be achieved with the optional adaptor plate. Accessories included.



DN200 (8") / DN250 (10")

Order no. 402036

DN315 (12") / DN400 (16") / DN500 (20")

Order no. 402033

DN630 (25")

Order no. 402040

#### GRAF-Tex geotextile

Sold by the metre, roll width 5 m (16' 4.9")



Order no. 231002

# EcoBloc Inspect flex

## Case study



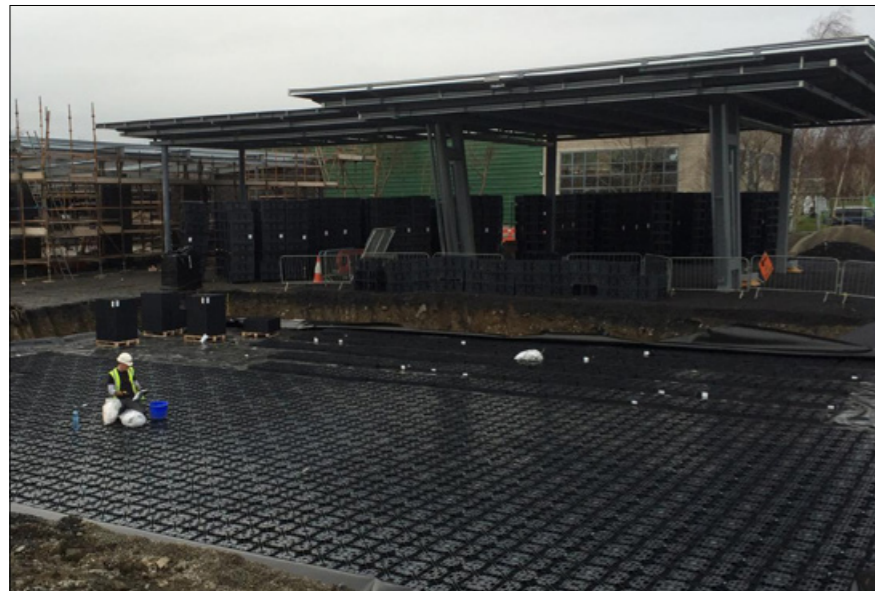
Factory extension, Sandrigo (IT)



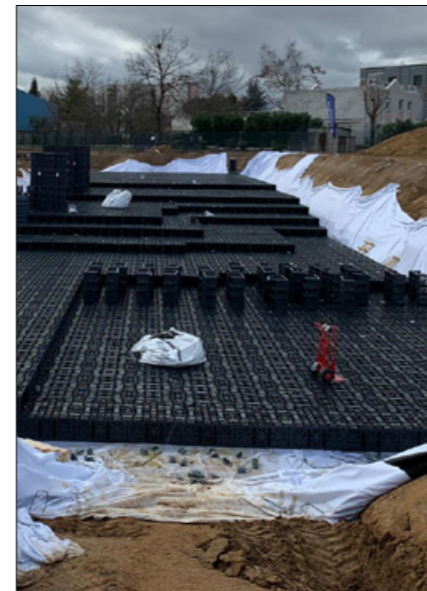
Senior residence, Leipzig (DE)



Football Stadium, Linz (AT)



Service Station, Dublin (IRE)



Retailer, Anzėieux-Bouthėon (FR)



Warehouse, Jandakot (AU)



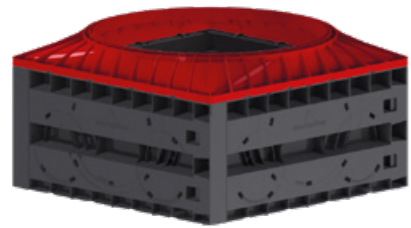
Train station, Luxembourg (LU)



# EcoBloc maxx / light

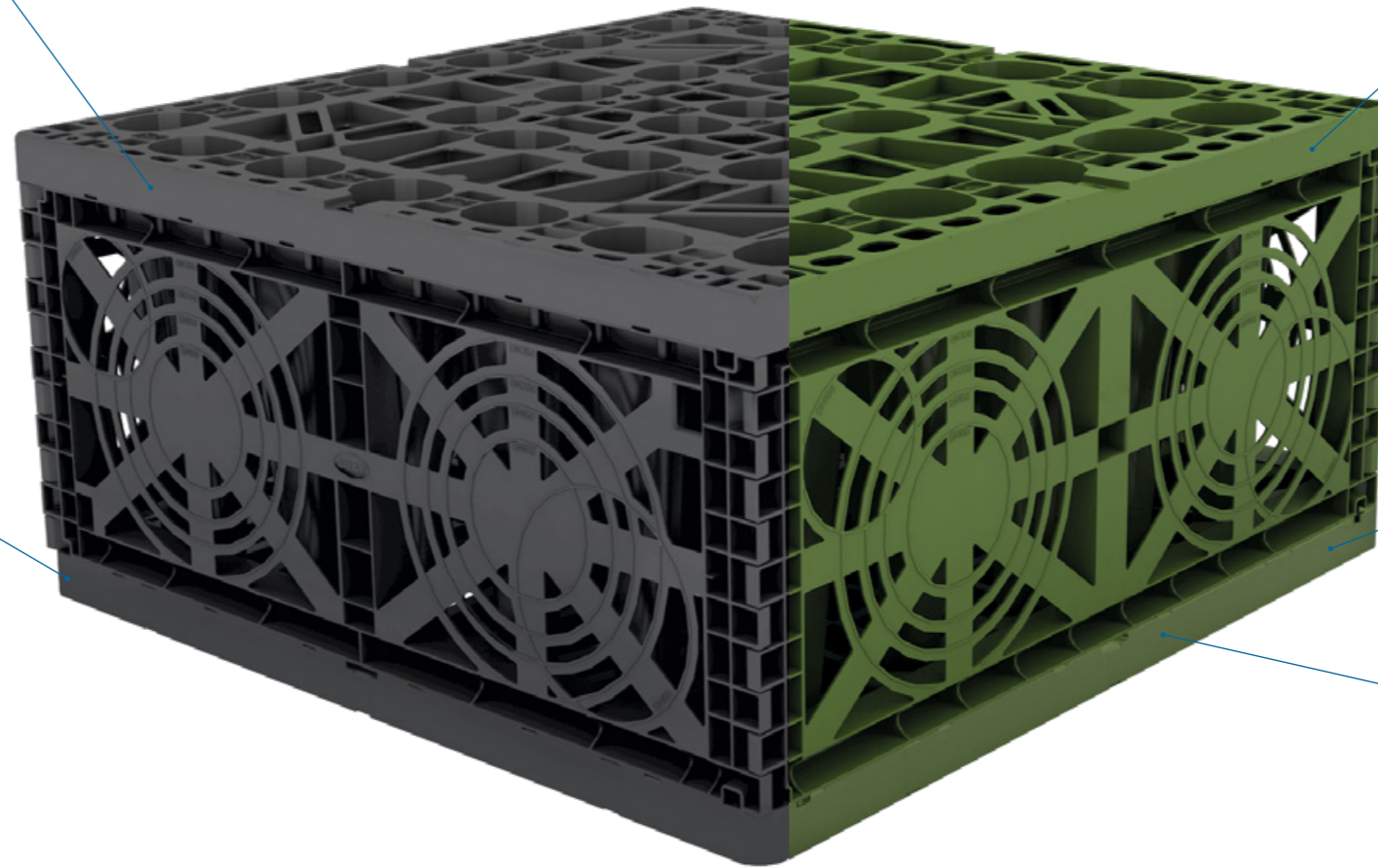
## Fully integrated shaft

The Vario 800 flex shaft system (page 48) can be directly installed in an EcoBloc infiltration / attenuation system.



## Lorry-bearing

The EcoBloc maxx has a lorry-bearing capacity of 40 tons / HS-20 with an 800 mm (2' 7.5") earth covering.



The EcoBloc maxx and light are produced out of 100 % recycled plastic. GRAF produces its own high quality polymers out of recycled plastic. You can find more information about it at page 60/61.

## Up to 97 % storage volume

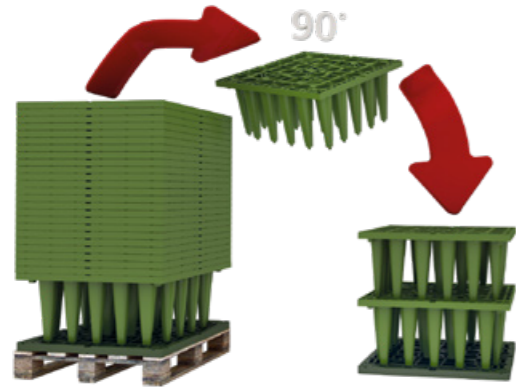
The EcoBloc light has a gross volume of 225 litres (59.4 US gal.) and a storage volume of 219 litres (57.9 US gal.). With a storage volume in excess up to 97 %, it is a market-leading product. The EcoBloc maxx still offers a storage coefficient of 96 % despite the high load-bearing capacity.

## Service life of over 50 years

A durable product design ensures sustainability. The EcoBloc system and the Vario 800 flex shaft system are designed for a service life of over 50 years.

## Easy to inspect

Combination with EcoBloc inspect flex possible to make the system inspectable and cleanable.

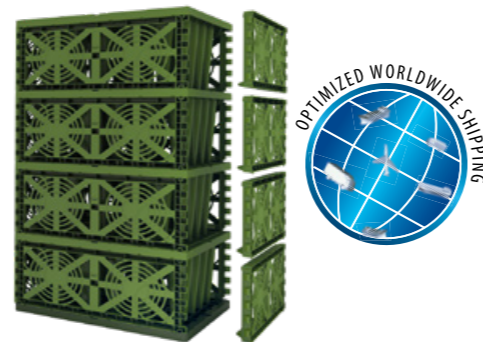


### 1. Stackable

To save space during transport, the EcoBloc maxx and EcoBloc light modules are stacked into each other. This minimizes transport costs, storage space in stock and CO2 emissions.

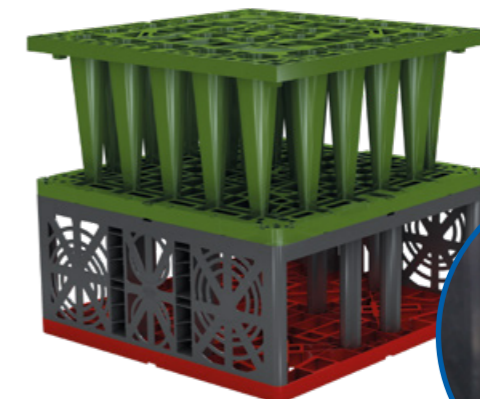
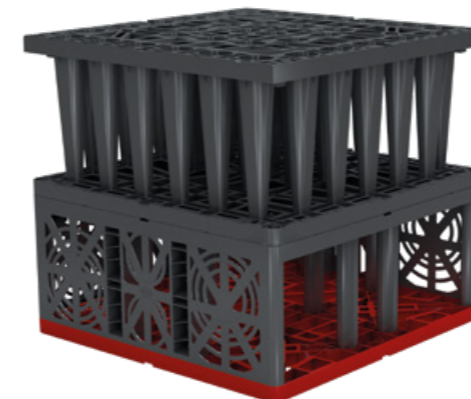
### 2. Easy installation

The EcoBloc base plate forms the foundations of each EcoBloc system. Up to 13 EcoBloc modules can be fitted on one base plate.



### 3. Ready

The side faces are sealed with EcoBloc end plates. The EcoBloc system can be adapted to match individual requirements.



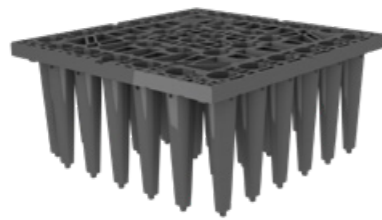
# EcoBloc maxx / light

## EcoBloc maxx

- 410 m<sup>3</sup> (108,310 US gal.) / Truck
- HGV loading / HS-20 load bearing
- 96 % Storage coefficient



Q **WEBCODE** G4108



## EcoBloc maxx

Connecting surfaces on EcoBloc maxx end plates

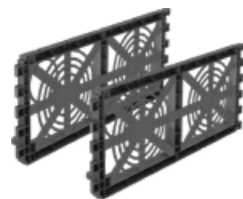
Volume [l]	Length [mm]	Width [mm]	Height [mm]	Order no.
225 (59.4 US gal.)	800 (2' 7.5")	800 (2' 7.5")	350 (13.8")	402200



## EcoBloc maxx base plate

Forms the foundation of the EcoBloc maxx system

Volume [l]	Length [mm]	Width [mm]	Height [mm]	Order no.
25 (6.6 US gal.)	800 (2' 7.5")	800 (2' 7.5")	40 (1.6")	402201



## EcoBloc maxx end plates

The outside surface of an EcoBloc maxx system is sealed by end plates with contact DN110 (4") / DN160 (6") / DN200 (8") / DN250 (10").

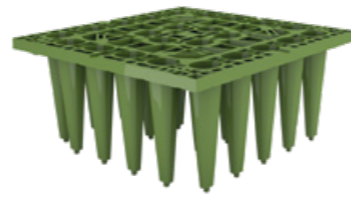
Item	Order no.
Set (2 units)	402203

## EcoBloc light

- 610 m<sup>3</sup> (161,140 US gal.) / Truck
- Vehicle loading / H-15 load bearing
- 97 % Storage coefficient



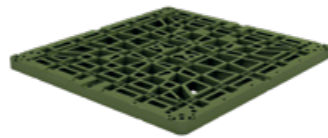
Q **WEBCODE** G4109



## EcoBloc light

Connecting surfaces on EcoBloc light end plates

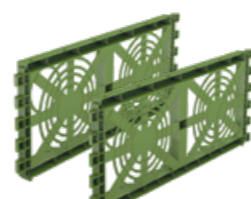
Volume [l]	Length [mm]	Width [mm]	Height [mm]	Order no.
225 (59.4 US gal.)	800 (2' 7.5")	800 (2' 7.5")	350 (13.8")	402300



## EcoBloc light base plate

Forms the foundation of the EcoBloc light system

Volume [l]	Length [mm]	Width [mm]	Height [mm]	Order no.
25 (6.6 US gal.)	800 (2' 7.5")	800 (2' 7.5")	40 (1.6")	402301



## EcoBloc light end plates

The outside surface of an EcoBloc light system is sealed by end plates with contact DN110 (4") / DN160 (6") / DN200 (8") / DN250 (10").

Item	Order no.
Set (2 units)	402303

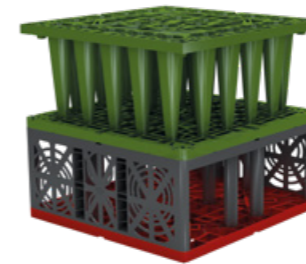
## EcoBloc Inspect flex & maxx

- HGV loading / HS-20 load bearing
- 96 % Storage coefficient
- Inspectable
- High pressure jetting possible



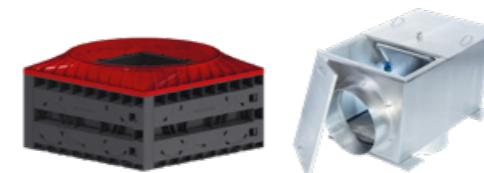
## EcoBloc Inspect flex & light

- Vehicle loading / H-15 load bearing
- 97 % Storage coefficient
- Inspectable
- High pressure jetting possible



## Shaft & shaft accessories

- from page 48
- Pre-filtration
- internal and external shafts



## Attenuation

- from page 34
- EcoBloc attenuation build up
- Outflow regulators



## EcoBloc System accessories

### EcoBloc connectors

For horizontal connection



Set 10 units  
Order no. 402015

Set 25 units  
Order no. 402018

Set 200 units  
Order no. 402025

### Deaeration end

DN110 (4")



Order no. 369017

DN160 (6") / DN200 (8"), excl. connection pipe

Order no. 369046

### EcoBloc adaptor plate

Connection dimensions up to DN630 can be achieved with the optional adaptor plate. Accessories included.



DN110 (4") / DN160 (6")

Order no. 402037

DN200 (8") / DN250 (10")

Order no. 402036

DN315 (12") / DN400 (16") / DN500 (20")

Order no. 402033

DN630 (25")

Order no. 402040

### GRAF-Tex geotextile

Sold by the metre, roll width 5 m (16' 4.9")



Order no. 231002

# EcoBloc maxx / light

## Case study



Warehouse, Vinterbo (NO)



Football Stadium, Madrid (ES)



Infrastructure, South Al-Mutlaa (KW)



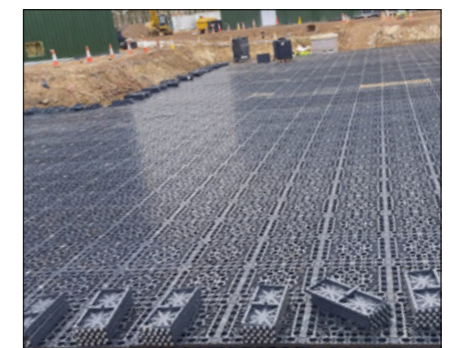
Housing development, Acapulco (MX)



Brewery, Kerry (IRE)



Housing development, Bétera (ES)



Studio, Hertfordshire (GB)

# Rain Bloc compact 300

## Rain Bloc compact 300

- Lorry-bearing 60 tons / HS-25
- No endplates or baseplates needed

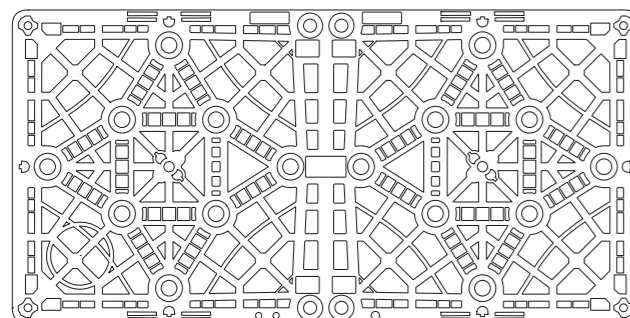
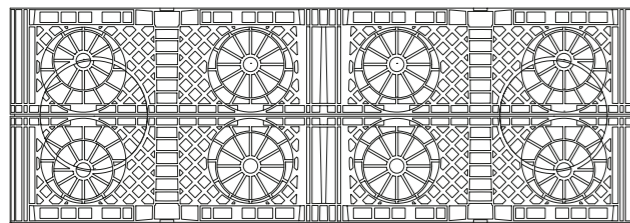
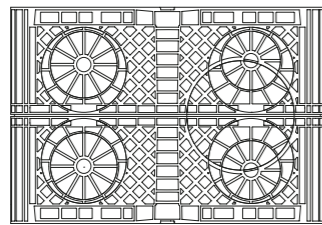


Q **WEBCODE** G4110

## Rain Bloc compact 300

Contact surfaces DN110 (4") / DN125 (5") / DN160 (6") / DN200 (8")

Volume [l]	Length [mm]	Width [mm]	Height [mm]	Order no.
300 (79.3 US gal.)	1200 (47.2")	600 (23.6")	420 (16.5")	360050



## Rain Bloc compact 300 accessories

### Connecting elements

For horizontal connection.

Set 10 units

Order no. 402015

Set 25 units

Order no. 402018

Set 200 units

Order no. 402025



### Deaeration end

DN110 (4"), incl. connection pipe

Order no. 369017

DN160 (6") / DN200 (8"), excl. connection pipe

Order no. 369046



### GRAF-Tex geotextile

Sold by the metre, roll width 5 m (16' 4.9")

Order no. 231002

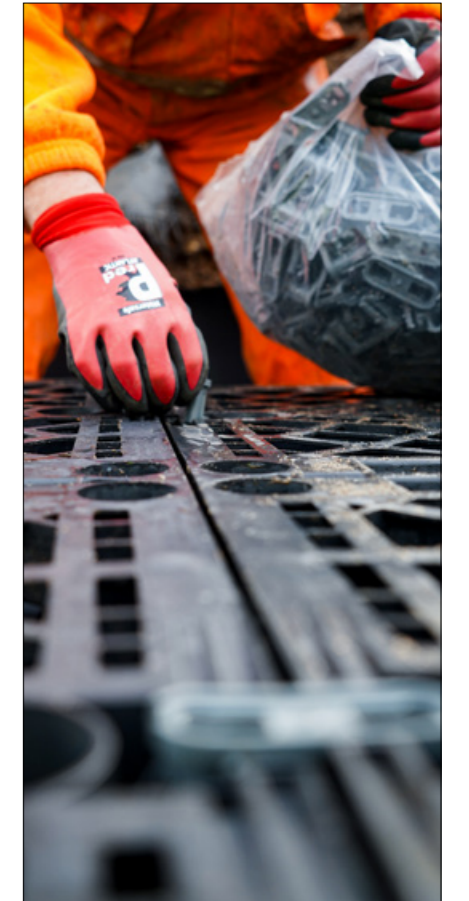


### External filters and shafts from page 50



# Case Study

New housing development in Mitcham, London (UK)



# Infiltration Tunnel / twin



## Easy installation

The GRAF Infiltration Tunnels are laid in lines and can be flexibly adapted to specific conditions and to the individual storage volume requested. The installation of the modules is easy, quick and variable. The installation is possible without heavy equipment, as one Infiltration Tunnel only weights 11 kg (24.3 lbs). The tunnel modules are simply stuck together in one line and equipped with 2 end plates per line.



The Infiltration Tunnel / twin is produced out of 100 % recycled plastic. GRAF produces its own high quality polymers out of recycled plastic. You can find more information about it at page 60/61.



## Infiltration Tunnel twin – Twice the volume with the same space requirement

Upon request, the Infiltration Tunnel twin 600 litres (158.5 US gal.) offers volume through the connection of two identical Infiltration Tunnel modules.



## 300l Volume

The compact dimensions combined with a storage coefficient of 100 % result in a useful volume of 300 l (79.3 US gal.).

## Lorry-bearing

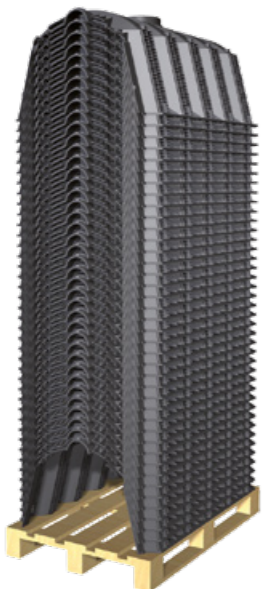
The GRAF Infiltration Tunnel 300 has a heavy-duty lorry-bearing capacity of 60 tons / HS-25 with an 800 mm (2' 7.5") earth covering.

## Connections up to DN315 (12")

Large infiltration volumes require large pipe diameters. For the GRAF Infiltration Tunnel, this is not a problem: each end plate features connections in the sizes DN110 (4") / DN160 (6") / DN200 (8") and DN315 (12"). In addition, connections in the sizes DN110 (4") and 200 (8") are provided on the upper surface for the connection of a ventilation system or an inspection opening.

## High infiltration performance

The ditch elements are placed directly upon an even layer of gravel. The sides are then covered with geotextile and the end faces are closed using end plates. This installation and the side slats ensure a permanent high infiltration performance.

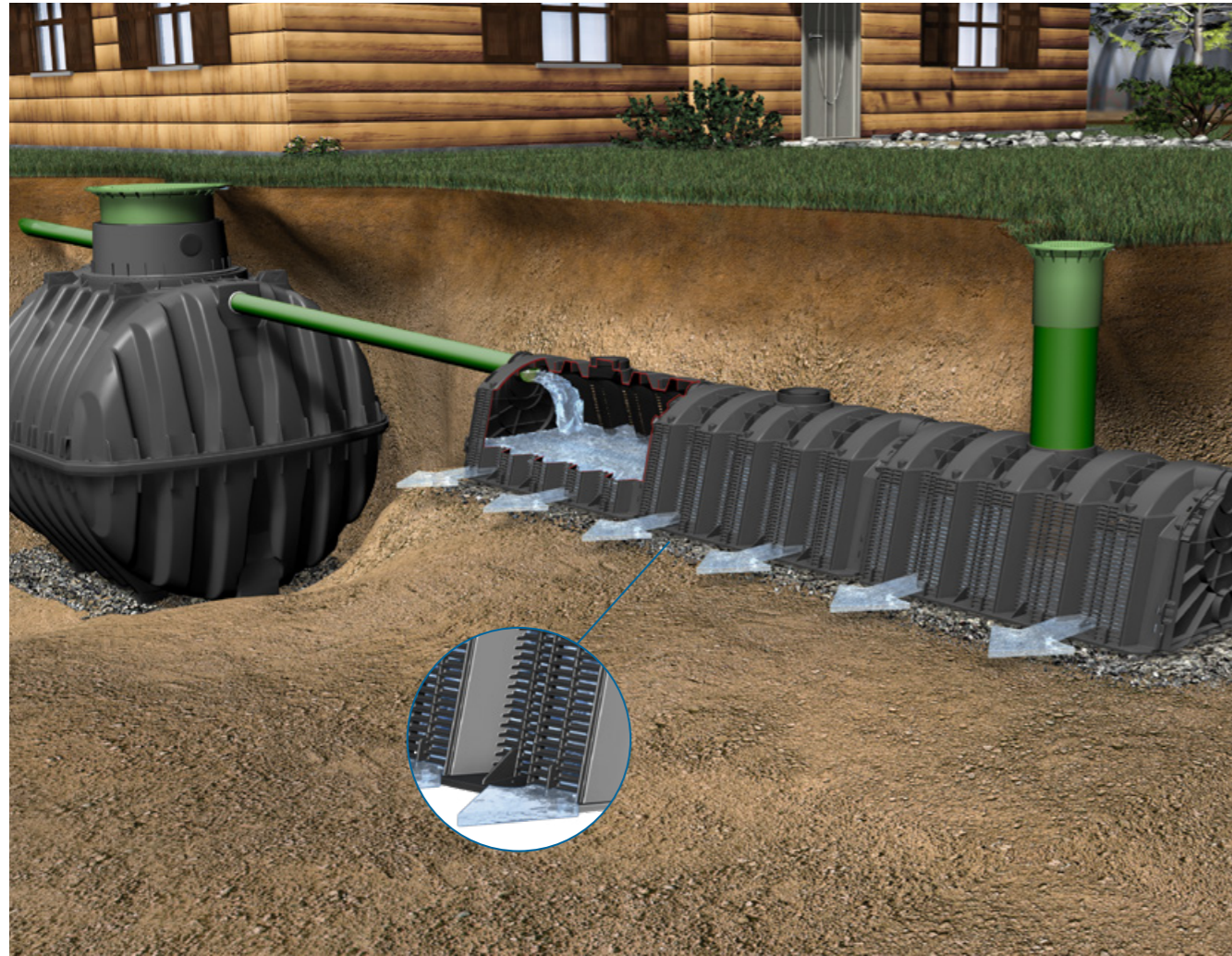


## Up to 12,000 litres infiltration volume per pallet

Thanks to its special design, the GRAF Infiltration Tunnel can be stacked easily. Consequently, the shipment of up to 40 Infiltration Tunnels on one pallet saves considerable transport and storage costs.



# Infiltration Tunnel / twin

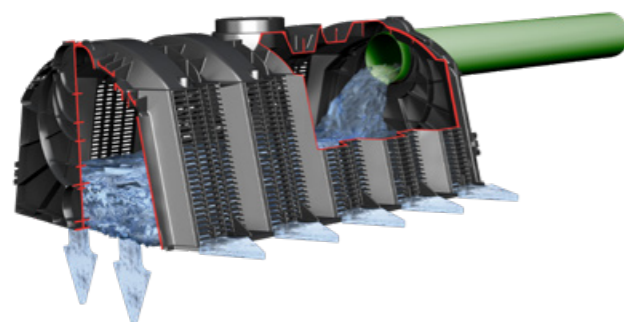


A percolation system downstream of the sewage treatment plant offers optimal disposal of the clarified wastewater. Only a soil with percolation capacity and a minimum distance of 1 meter (3' 3.4") from the groundwater level at the tunnel base are required. The percolation system consists of several tunnel modules as well as two end plates and can be dimensioned as desired.

## Easy installation

The GRAF Infiltration Tunnels are laid in lines and can be flexibly adapted to specific conditions and to the individual storage volume requested. The installation of the modules is easy, quick and

variable. Installation is possible without heavy equipment, as one Infiltration Tunnel weighs just 11 kg (24.3 lbs). The tunnel modules are simply joined together in a line and two end plates are fitted per line.



## Wastewater Treatment Solutions

>> Further details on wastewater treatment and separators for grease and oil can be found in our "Wastewater Treatment Solutions" range catalogue.

### Infiltration Tunnel 300

[Q WEBCODE G4103](#)

- Suitable for HGV 60 / HS-25 load bearing
- 300 m<sup>3</sup> (79,250 US gal.) / Container
- Inspectable



### Infiltration Tunnel 300

Volume [l]	Length [mm]	Width [mm]	Height [mm]	Order no.
300 (79.3 US gal.)	1160 (3' 9.7")	800 (2' 7.5")	510 (1' 8")	230010



### Infiltration Tunnel 130

Volume [l]	Length [mm]	Width [mm]	Height [mm]	Order no.
130 (34.3 US gal.)	1190 (3' 10.9")	500 (1' 7.7")	320 (1' 0.6")	410200

### Infiltration Tunnel twin 600

[Q WEBCODE G4104](#)

- Suitable for vehicle load bearing
- 300 m<sup>3</sup> (79,250 US gal.) / Container
- Inspectable



### Infiltration Tunnel twin 600

Click bold connectors included

Volume [l]	Length [mm]	Width [mm]	Height [mm]	Order no.
600 (158.5 US gal.)	1160 (3' 9.7")	800 (2' 7.5")	1020 (3' 4.2")	410130

### End plate for Infiltration Tunnel 300/twin 600

Contact surfaces DN110 (4") / DN160 (6") / DN200 (8") / DN315 (12")

Item	Order no.
Set (2 units)	231004



### End plate for Infiltration Tunnel 130

Contact surfaces DN110 (4")

Item	Order no.
Set (2 units)	410203



### Inspection end

DN200 (8")

Order no. 340527



### GRAF click bolt connectors

Connector for Infiltration Tunnel twin (set of 6 pcs. for one Infiltration tunnel twin 600)

Order no. 410094



### Deaeration end

DN110 (4"), incl. connection pipe

Order no. 369017

DN160 (6") / DN200 (8"), excl. connection pipe

Order no. 369046



### GRAF-Tex geotextile

Sold by the metre, roll width 5 m (16' 4.9")

Order no. 231002

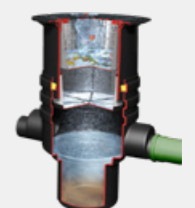


Sold by the metre, roll width 2.5 m (8' 2.4")

Order no. 231007

### External filters and shafts

from page 50



# Infiltration Tunnel / twin

## Case study



Football Stadium, San Luis (AR)



Warehouse, Plovdiv (BG)



Housing development, Quinta da Balreeia (PT)



Housing development, Powode Zdjecie (PL)



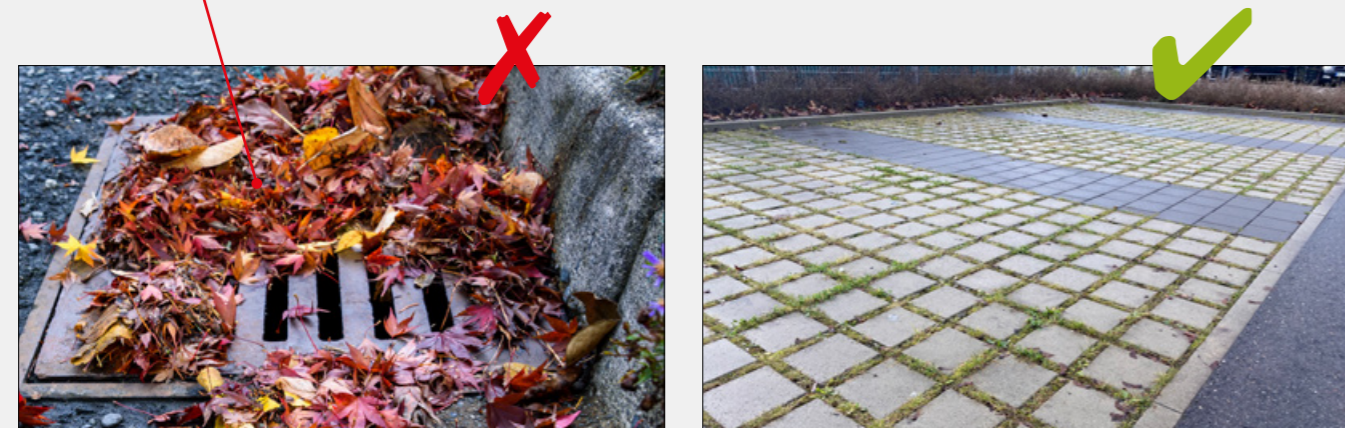
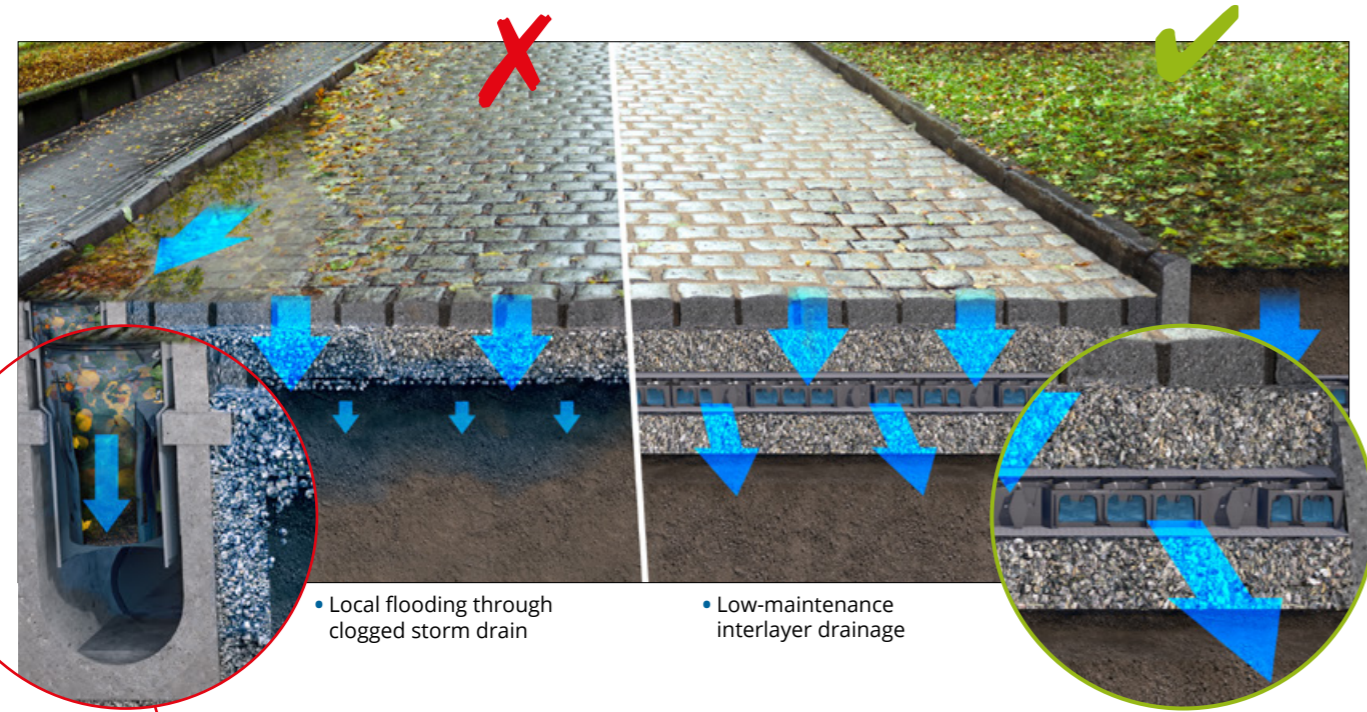
Campsite, Kiew (UA)



Military Area, Mazuren (PL)

# XFlow

## Advantages



- Service vehicle required
- Bad maintenance is only detectable during heavy rain events
- Storm drain deepest point - vulnerable to dirt

- Easy maintenance of catchment area
- No labor intensive maintenance and inspection necessary
- Ideal for areas outside of the regular maintenance scope
- Only the usual cleaning work is necessary on carparks and traversable surfaces and paths
- No further underground construction products required
- Fast detection of missing service

# XFlow

## System overview and components

### XFlow 50-S

- 1 cell = 0.16 m<sup>2</sup> (1.72 ft<sup>2</sup>) infiltration / collector area
- Storage coefficient of 85 %
- Gross / net volume: 8.2 l (2.17 US gal.) / 7.0 l (1.85 US gal.)



### XFlow 50-S

Drainage cell with one quarter of the area for installation over small areas or for supplementing edge areas around large installations with XFlow 50-L.

Area [m <sup>2</sup> ]	Length [mm]	Width [mm]	Height [mm]	Order no.
0.16 (1.72 ft <sup>2</sup> )	560 (22")	280 (11")	52 (2")	495001

Q WEBCODE G4701

### Accessories

#### GRAF-Tex geotextile

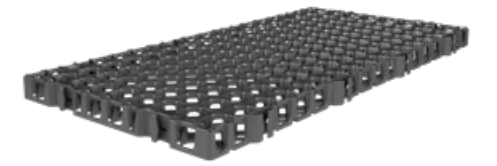
Sold by the metre, roll width 5 m (16' 4.9")

Order no. 231002



### XFlow 50-L

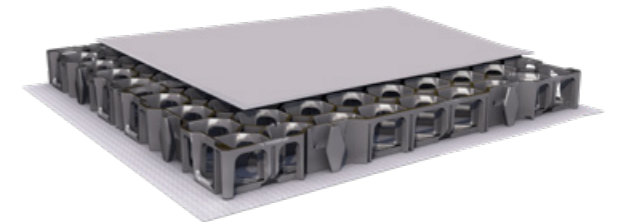
- 1 cell = 0.64 m<sup>2</sup> (6.89 ft<sup>2</sup>) infiltration / collector area
- Storage coefficient of 88 %
- Gross / net volume: 32.6 l (8.61 US gal.) / 28.7 l (7.58 US gal.)



### XFlow 50-L

Drainage cell ideal for large installations with high savings potential in installation times and work.

Area [m <sup>2</sup> ]	Length [mm]	Width [mm]	Height [mm]	Order no.
0.64 (6.89 ft <sup>2</sup> )	1120 (44")	560 (22")	52 (2")	495000





# XFlow

## Case study



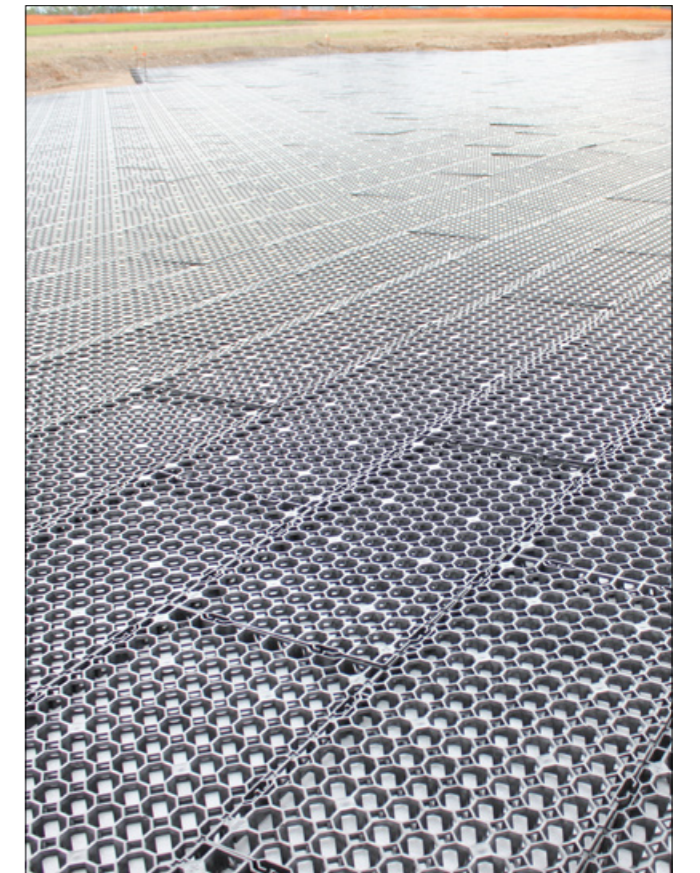
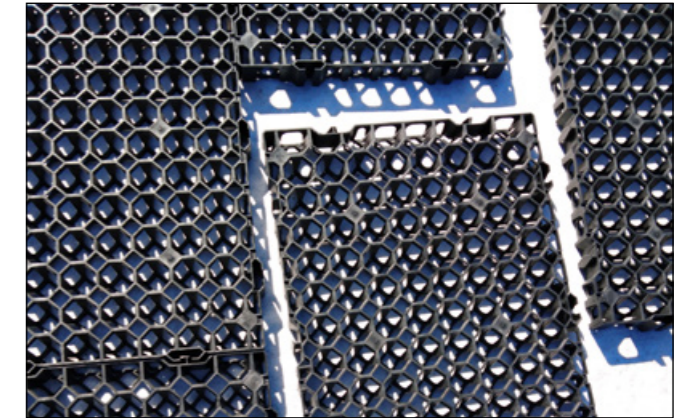
### Summary

- Dachstein (France)
- Products: XFlow 50-L & XFlow 50-S
- Application: Interlayer drainage
- Specifics:
  - Installation time with 5 installers:
    - XFlow 50-L 2,500 – 2,700 m<sup>2</sup>/day (26,909.8 – 29,062.6 ft<sup>2</sup>/day)
    - XFlow 50-S 1,500 – 1,700 m<sup>2</sup>/day (16,145.9 – 18,298.7 ft<sup>2</sup>/day)
  - 27,090 m<sup>2</sup> (291,594.3 ft<sup>2</sup>) covered surface



The extensive expansion of outdoor storage area in Alsace, France was the goal of this construction. An area of more than three football fields will be used to store goods, pallets and others products. The area shall be usable also in heavy rain conditions and floods/damages must be avoided. So, landowner decided to combine permeable grid on the surface with GRAF XFlow 50-L and 50-S in top layers to prevent flooding and store temporarily stormwater during stormy weather.

The rainwater will infiltrate from GRAF XFlow drainage cells directly into the soil or is lead through the cells to an overground sewer system. GRAF XFlow drainage cells ensure high-volume for stormwater and best hydraulic performance on each square meter of installation under permeable pavements, grid areas or similar. The two product dimensions serve fastest installations with GRAF XFlow 50-L and highest flexibility in design and landscape forms with GRAF XFlow 50-S.





# Attenuation

- > Overview
- > Attenuation with EcoBloc
- > Detention and retention cisterns
- > Outflow regulators

Page 36  
 Page 38  
 Page 40  
 Page 42

# What is attenuation?

An attenuation tank is a simple system used to hold excess water. It receives water through inlets, which can include pipes and channel drains, and usually has one outlet. The tank acts as a void to allow the water to build up and prevent overwhelming downstream drains during heavy storms.

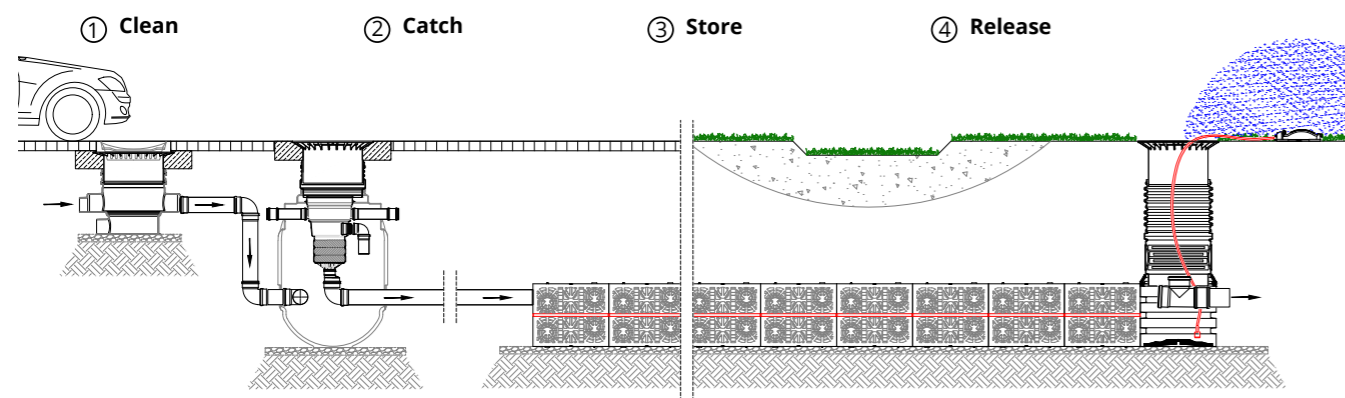


## Detention - Tank systems to temporary store and release stormwater

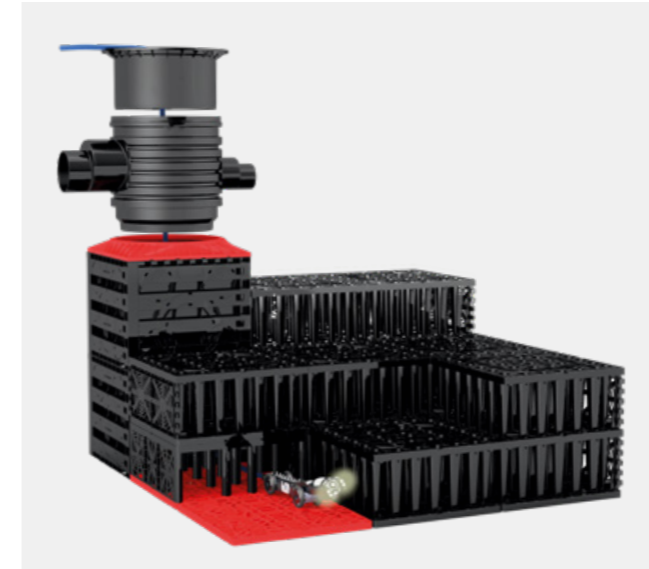
A detention tank is an attenuation tank which contains an outlet at the bottom of the tank. This outlet typically contains a flow control device to regulate the water's discharge rate.

## Retention - The combination of detention and rainwater harvesting

A retention tank is the combination of detention and rainwater harvesting. The lower part of the retention tank is designed as rainwater harvesting volume. Right above the defined useful volume of the tank, a flow regulator is installed to release the excessing stormwater controlled through the outlet.



# Solutions for attenuation



## Attenuation with EcoBloc

The flexible and individual solution to build a detention tank

>> Page 38/39



## Pre-fabricated tanks

Tank systems to create a detention or retention system fast and easy

>> Page 40/41



## Outflow regulators

Static and hydro-dynamic flow regulators to release the stormwater at a controlled rate.

>> Page 42/43

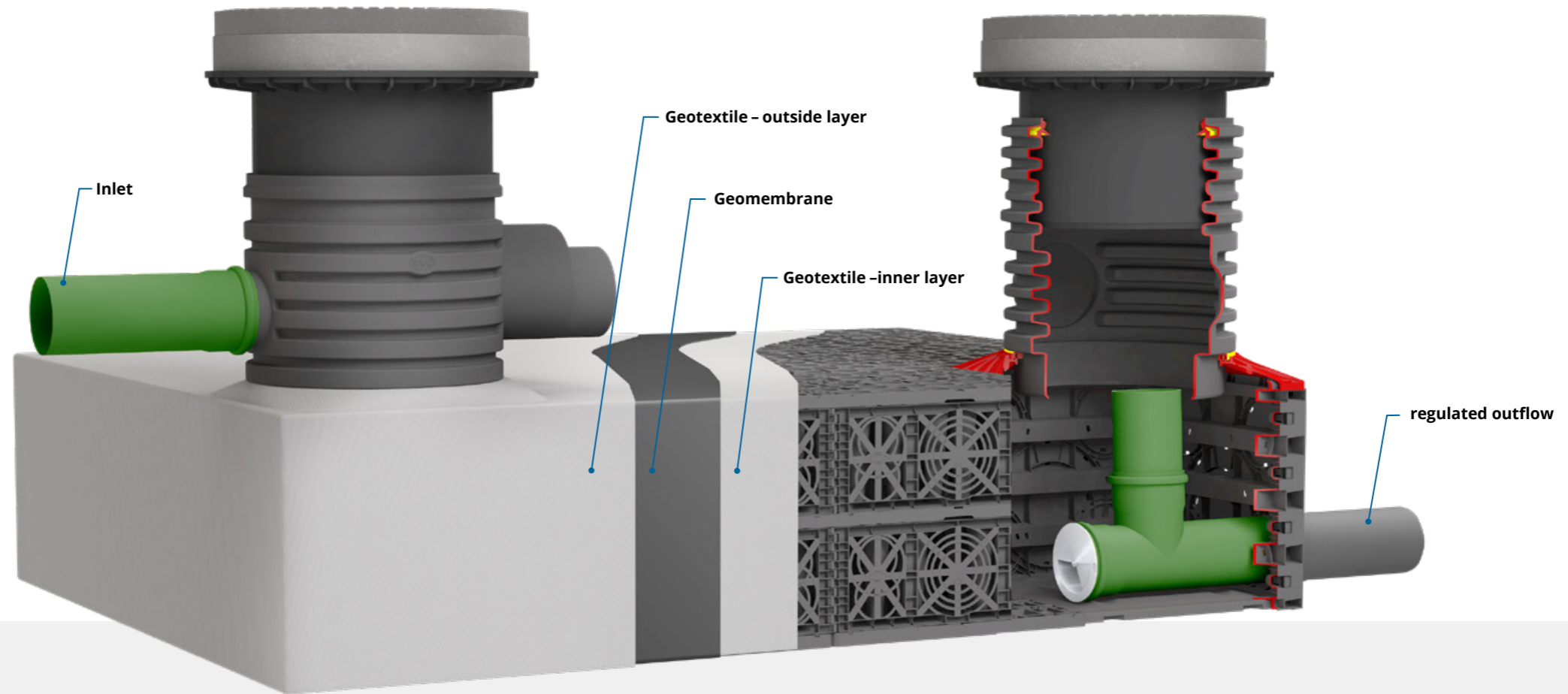
# Attenuation with EcoBloc

Retention volumes can be built both with pre-fabricated tank systems (e.g., with the Carat S) and with the EcoBloc system. In the EcoBloc variant, these are completely

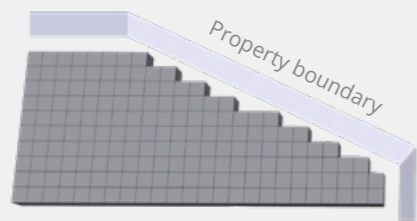
wrapped with a three-layer construction of geotextile, waterproof geomembrane, and geotextile. The inner layer of geotextile serves to protect the waterproof

geomembrane from sharp block edges. The outside layer of geotextile prevents damage from surrounding soil or stones.

[WEBCODE G4310](#)

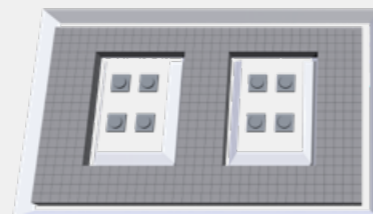


## The flexible solution



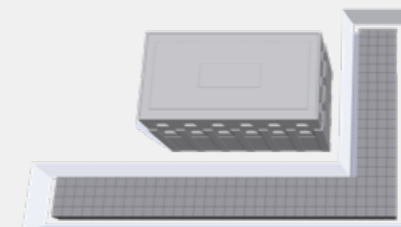
### Building envelope

The advantages of constructing an attenuation system with EcoBloc include optimal adaptation to disturbances within the building envelope. The modular EcoBloc can be modeled to fit any dimensions and geometries of the respective building envelope. In contrast to conventional attenuation tanks, larger volumes can therefore be realized.



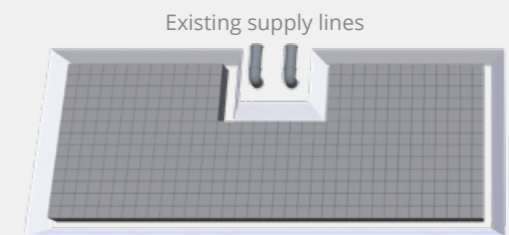
### Foundations

The positioning and definition of attenuation systems often happen after the building planning phase. This can lead to the need for adjustments to accommodate planned foundations in the subsoil or existing supporting elements. Larger monolithic attenuation tanks may offer limited flexibility in such situations. However, attenuation systems made of EcoBloc can be positioned and placed around foundations or infrastructure in the soil, providing greater adaptability to the site's requirements and allowing for more efficient use of available space.



### Angular geometries

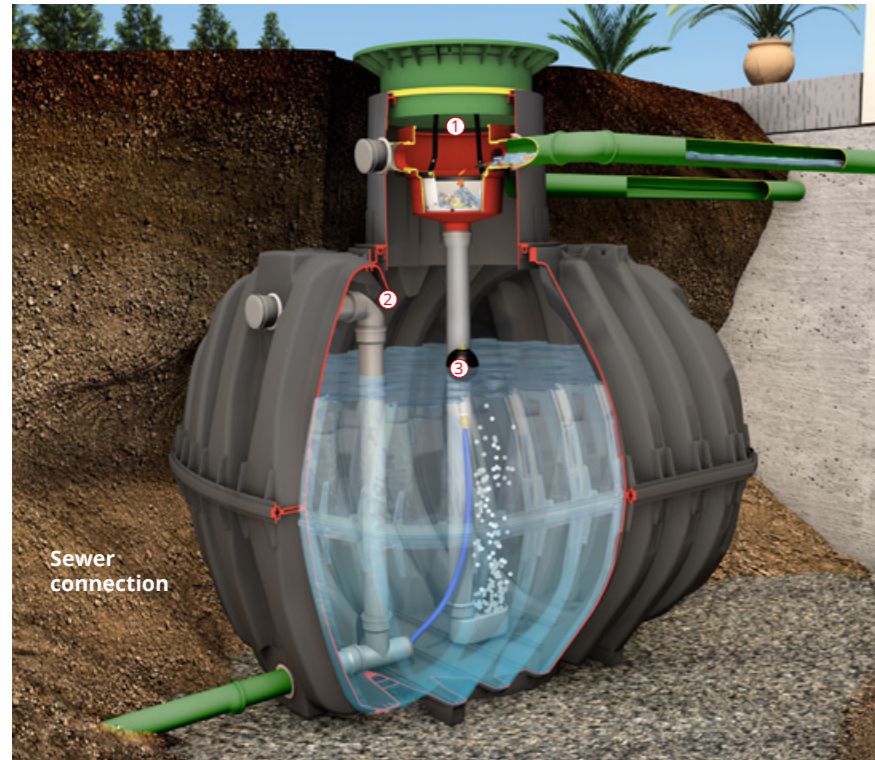
The right-angled dimensions of the EcoBloc family and the corresponding Vario 800 flex shaft system with very short side lengths of 0.8 m (2' 7.5") allow for individual adaptation to building edges or infrastructure. Conventional monolithic tanks are usually circular in dimensions, and the available space is not adequately utilized, especially with right-angled boundaries.



### Bypassing existing infrastructure

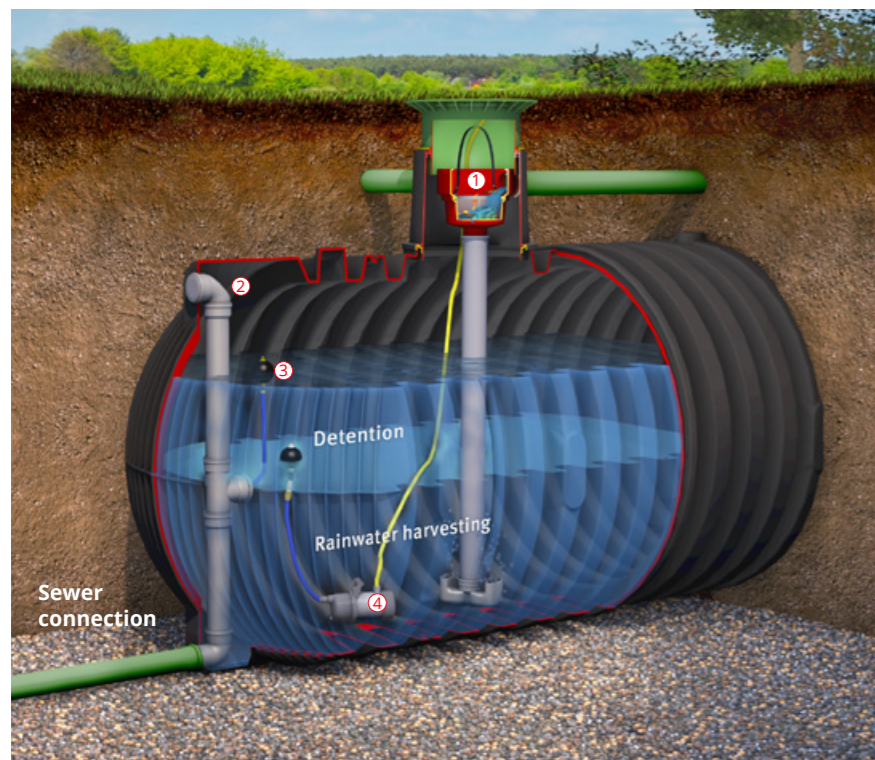
Existing infrastructure such as existing gas lines or sewer lines restrict the possible installation positions and dimensions of attenuation systems. The EcoBloc can be built around the infrastructure in any shape and level, offering optimal usable volume even in complex building envelopes.

# Detention and retention cistern



## Detention cisterns Tank systems to temporary store and release stormwater

- ① Inlet filter system
- ② Emergency overflow
- ③ Outflow regulator



## Retention cisterns plus The combination of detention and rainwater harvesting

- ① Inlet filter system
- ② Emergency overflow
- ③ Outflow regulator
- ④ Irrigation pump



### Carat S

Volume [l]	Order no. Detention	Order no. Retention
2,700 (700 US gal.)	370500	-
3,750 (1,000 US gal.)	370501	370519
4,800 (1,250 US gal.)	370502	370520
6,500 (1,700 US gal.)	370503	370521

### Carat XL

Volume [l]	Order no. Detention	Order no. Retention
8,500 (2,240 US gal.)	370504	370523
10,000 (2,640 US gal.)	370505	370525
13,000 (3,430 US gal.)	370535	370536

### Carat XXL

Volumes from 16,000 l (4,230 US gal.) up to 122,000 l (32,230 US gal.) available

### Platin

Volume [l]	Order no. Detention	Order no. Retention
1,500 (400 US gal.)	390300	-
3,000 (800 US gal.)	390301	390312
5,000 (1,325 US gal.)	390302	390315
7,500 (1,980 US gal.)	390305	390324

### Platin XL

Volume [l]	Order no. Detention	Order no. Retention
7,500 (1,980 US gal.)	390339	390340
10,000 (2,640 US gal.)	390327	390329
15,000 (3,960 US gal.)	390328	390330

### Platin XXL

Volumes from 20,000 l (5,284 US gal.) up to 65,000 l (17,172 US gal.) available

SHAFTS COVERS  
>> page 58/59



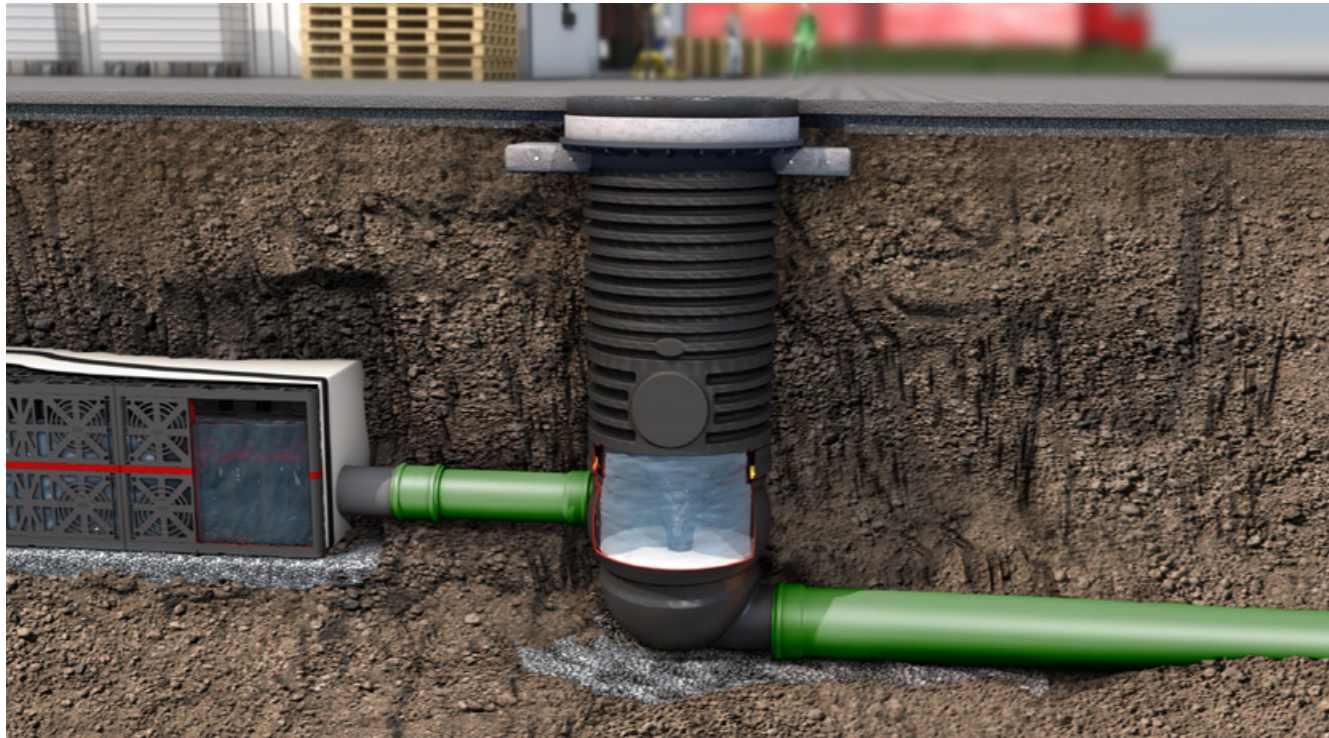
>> Further details on retention and rainwater harvesting can be found in our "Sustainable Rainwater Management" range catalogue.



# Outflow regulators

## VS-Control flex M

The vortex flow control shaft allows for the regulation of volume flows of up to 55 liters per second (l/s) (14.5 US gal./s). Specifically, the vortex flow control shaft model VS-Control flex M is well-suited for integration into attenuation systems equipped with Graf Eco-Bloc elements or GRAF cisterns. This system ensures precise control over water flow rates, making it an ideal solution for managing stormwater runoff in various applications.



### VS-Control flex M

- Minimum height loss 420 mm (1' 4.5")
- Individually adjustable throttle discharge capacity
- Project-specific dimensioning of the replaceable orifice
- Easy inspections thanks to the horizontal arrangement of the orifice
- 360° DN250 (10") discharge rotation for flexible configurations

Diameter	Inlet size	Outlet size	Order no.
DN630 (25")	DN200 (8")	DN250 (10")	340171

[Q WEBCODE G4331](#)

### Spare part set VS-Control flex M

Order no. 340180



SHAFTS ACCESSORIES  
[>> page 58/59](#)



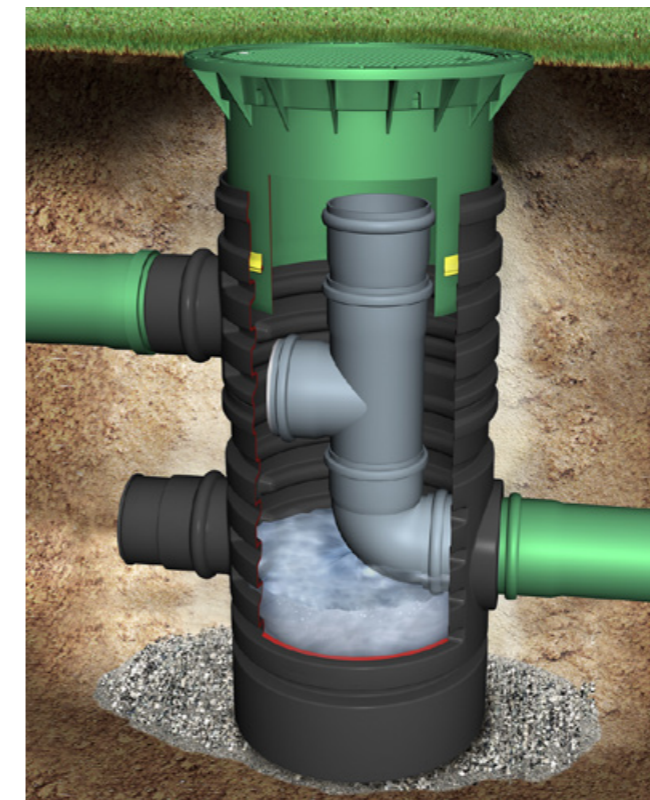
# Outflow regulators

## Choke drain shaft and flow regulators

### Choke drain shaft

VS drain regulator and emergency overflow included. Adjustable discharge can be set project-specifically.

Loading class	Order no.
pedestrian	340028
vehicle	340029
lorry	340019



## Vario 800 flex shaft Flow regulator packages



### Choke drain 1 DN110 (4")

Includes DN200 (8") emergency overflow, VS drain regulator DN110 (4") and PE-HD pipe for film welding; Adjustable discharge can be set project-specifically

Order no. 369005

### Choke drain 2 DN160 (6")

Includes DN200 (8") emergency overflow, VS drain regulator DN160 (6") and PE-HD pipe for film welding; Adjustable discharge can be set project-specifically

Order no. 369006

### Choke drain 4 DN200 (8")

Includes DN200 (8") emergency overflow, VS drain regulator DN200 (8") and PE-HD pipe for film welding; Adjustable discharge can be set project-specifically

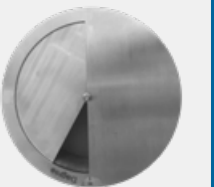
Order no. 369003

### Choke drain 5 DN315 (12")

Includes DN315 (12") VS drain regulator and PE-HD pipe for film welding; Adjustable discharge can be set project-specifically

Order no. 369000

## VS drain regulator



For piping	Adjustable discharge*	Order no.
DN110 (4")	0.5 up to 10 l/s (0.1 US gal./s to 2.6 US gal./s)	340512
DN160 (6")	1.0 up to 35 l/s (0.3 US gal./s to 9.2 US gal./s)	340548
DN200 (8")	1.5 up to 60 l/s (0.4 US gal./s to 15.9 US gal./s)	340557
DN315 (12")	15 up to 75 l/s (4 US gal./s to 19.8 US gal./s)	340558

\*Adjustable discharge can be set project-specifically



# Filter and shaft systems

> Overview	Page 46
> Vario 800 flex shaft	Page 48
> External shaft and filter systems	Page 50
> EcoPure rainwater treatment	Page 56
> Shaft accessories	Page 58

Foto: Urheberrechte stock.adobe.com © by studio

# Overview

## Shaft systems



**Vario 800 flex shaft**



**Infiltration shaft 600**



**Infiltration shaft 400**

Installation location	EcoBloc system	Soil	Soil
Loading class	pedestrian	•	•
	Vehicle	•	•
	Lorry	•	•
Connection options	DN110 (4")	•	•
	DN160 (6")	-	•
	DN200 (8")	•	•
	DN250 (10")	-	-
	DN315 (12")	•	-
	DN400 (16")	•	-
Diameter	800 x 800 mm (2' 7.5" x 2' 7.5")	600 mm (24")	400 mm (16")
Catalogue page	Page 48	Page 50	Page 51

## Rainwater treatment



**Saphir universal shaft**



**EcoPure 200**



**EcoPure 180**

Installation location	Soil	Soil	Soil
Material of filter insert	-	-	PP
Mesh width	-	-	0.35 mm (0.01")
Filter basket volume	-	-	15 l (4.0 US gal.)
<b>Dimensions</b>			
Difference in heights between inlet and outlet	-	545 - 970 mm (1' 9.5" - 3' 2.2")	435 mm (1' 5.1")
Diameter	depending on tank size	1155 mm (3' 9.5")	550 mm (1' 9.7")
Height	depending on tank size	1825 - 2870 mm (5' 11.9" - 9' 5")	1550 - 2030 mm (5' 1" - 6' 7.9")
Connection options	DN110 (4") / DN160 (6")	DN160 (6")	DN160 (6")
Catalogue page	Page 54	Page 56	Page 57

## External filter



**Drainstar filter external**

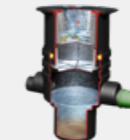


**Drainstar filter XL external**



**Optimax XXL**

Installation location	Soil	Soil	external shaft
Loading class	pedestrian	•	-
	Vehicle	•	-
	Lorry	-	-
Max. flow rate	16 l/s (4.2 US gal./s)	30 l/s (7.9 US gal./s)	200 l/s (52.8 US gal./s)
Material of filter insert	PP	Stainless steel	Stainless steel
Mesh width	0.35 mm (0.01")	0.75 mm (0.03")	0.35 mm (0.01")
Filter basket volume	15 l (4.0 US gal.)	25 l (6.6 US gal.)	-
<b>Dimensions</b>			
Difference in heights between inlet and outlet	-	-	45 mm (1.8")
Diameter	550 mm (21.7")	850 mm (33.5")	675 mm (26.6") x 1125 mm (3' 8.3")
Height	600 - 1050 mm (23.6" - 3' 5")	780 - 1330 mm (30.7" - 4' 5")	770 mm (30.3")
Connection options	DN110 (4") / DN160 (6")	DN200 (8") / DN250 (10")	DN315 (12") / DN400 (16")
Catalogue page	Page 53	Page 53	Page 55



**Infiltration filter shaft**



**Infiltration filter shaft XL**



**Sedimentation filter shaft**

Installation location	Soil	Soil	Soil
Loading class	pedestrian	•	•
	Vehicle	•	•
	Lorry	-	-
Max. flow rate	16 l/s (4.2 US gal./s)	30 l/s (7.9 US gal./s)	16 l/s (4.2 US gal./s)
Material of filter insert	Stainless steel / PP	Galvanized	PP
Mesh width	0.35 mm (0.01")	-	0.35 mm (0.01")
Filter basket volume	20 l (5.3 US gal.)	-	17 l (4.5 US gal.)
<b>Dimensions</b>			
Difference in heights between inlet and outlet	-	-	250 mm (10")
Diameter	550 mm (21.7")	855 mm (33.7")	850 mm (33.5")
Height	600 - 1050 mm (23.6" - 3' 5")	855 - 1385 mm (33.7" - 4' 6.5")	1000 - 1500 mm (3' 3.4" - 4' 11.1")
Connection options	DN110 (4") / DN160 (6")	DN200 (8") / DN250 (10")	DN160 (6")
Catalogue page	Page 52	Page 52	Page 54



# Vario 800 flex shaft

## Wide access

The Vario 800 flex shaft is terminated at the top by GRAF telescopic dome shafts. With a clear width of 600 mm, it gives easy access to the shaft.

## Connection surfaces up to DN400 (16")

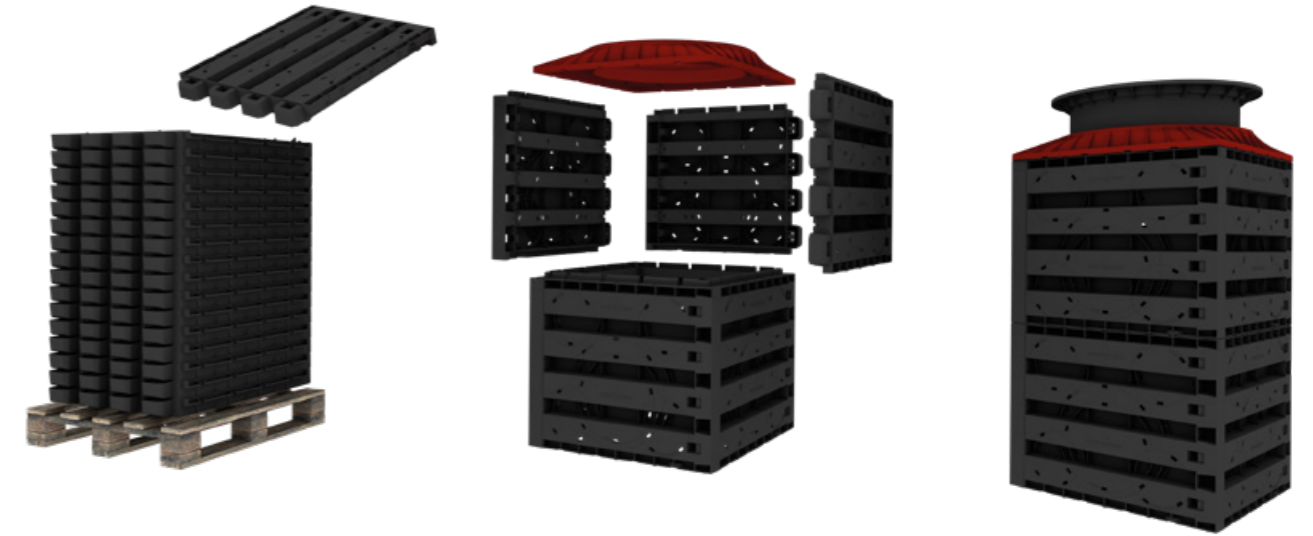
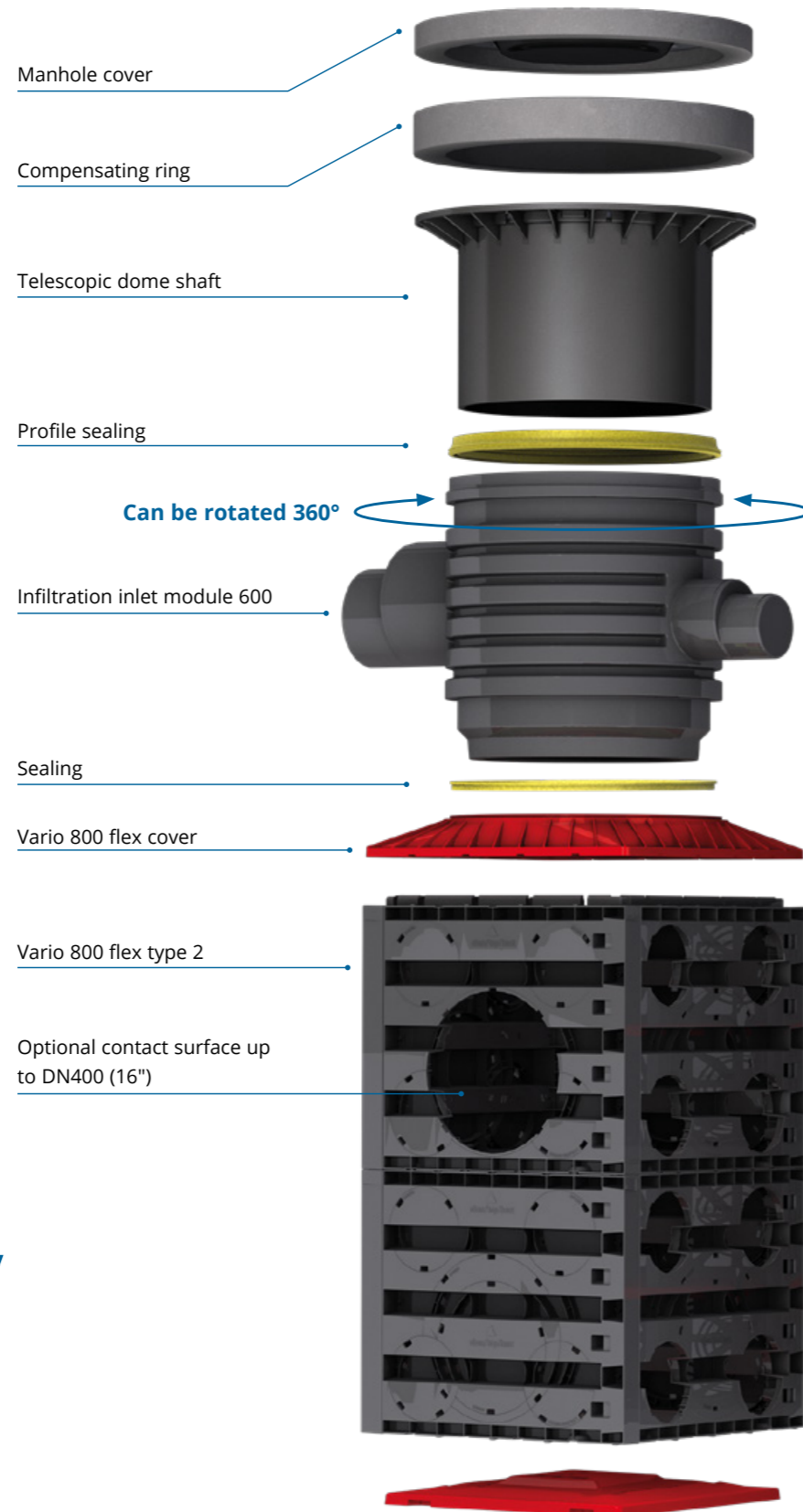
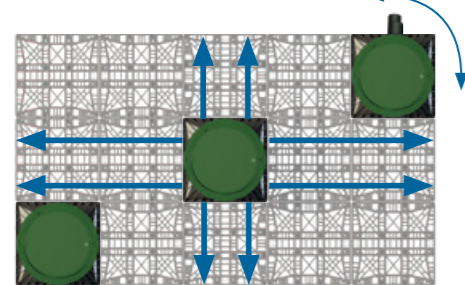
The Vario 800 flex shaft comes with DN200 (8"), DN315 (12") and DN400 (16") connection surfaces. The optional, freely rotating inlet module can be connected to pipes of sizes DN160 (6"), DN200 (8"), DN250 (10") and DN315 (12").

## No additional excavation

The Vario 800 flex shaft system can be directly installed in an EcoBloc infiltration or detention system. The connection surfaces of the inspection channels in the Vario 800 flex shaft system are accurately matched to the EcoBloc Inspect flex system.

## Can be positioned in any location

The dimensions of the Vario 800 flex shaft enable free positioning within the EcoBloc system. The corner position enables the connection of large pipe diameters of up to DN400 (16") on the two side panels. The central position offers ideal access to the inspection camera from all directions.



### 1. Stackable

To save space during transport and storage, the parts of the Vario 800 flex shaft are stacked into each other. This minimizes transport costs and CO2 emissions.

### 2. Easy installation

Groups of four wall elements are connected in a few simple steps and without tools to form a single height unit of the Vario 800 flex shaft. The height can be easily adjusted to the EcoBloc tank depth. A shaft cover and base plate complete the element.

### 3. Ready

GRAF accessory components can now be added to the Vario 800 flex shaft as required.



#### Vario 800 flex type 1

Shaft body for one or more layer of EcoBloc system.  
Contact surfaces for DN200 (8")  
Height of 355 mm (1' 2")  
Order no. 450050



#### Vario 800 flex type 2

Shaft body for two or more layer of EcoBloc system.  
Contact surfaces for DN200 (8") / DN315 (12") / DN400 (16")  
Height of 660 mm (2' 2")  
Order no. 450051



#### Vario 800 flex base / cover set

Each Vario 800 flex shaft requires one base / cover set  
Cover height of 100 mm (3.9")  
Order no. 450052

#### Accessories



>> Shaft covers page 58/59



>> Shaft accessories page 58/59



>> Retention accessories page 43

# Infiltration filter shaft DN600



- External shaft system DN600 (24"), optimized for the use in combination with EcoBloc or Infiltration Tunnel
- Can be build up individually, depending on the constructions needs
- Can be used as inlet shaft, filter shaft, external inspection shaft or as choke shaft
- All parts include a fitting for the joints

**Q** **WEBCODE** G9302

# Infiltration filter shaft DN400



- External shaft system DN400 (16"), optimized for the use in combination with EcoBloc or Infiltration Tunnel
- Can be build up individually, depending on the constructions needs
- Can be used as inlet shaft, filter shaft, external inspection shaft or as choke shaft
- All parts include a fitting for the joints

**Q** **WEBCODE** G9301

**Individual components**

**Infiltration inlet module DN600 (24")**  
Incl. profile seal for telescopic dome shaft; DN160 (6") / DN200 (8") / DN250 (10") / DN315 (12") connections

Order no. 330360

**Infiltration filter strainer DN600 (24")**  
Made entirely from stainless steel, mesh width 0.75 mm (0.03")

Order no. 340523

**Infiltration connecting piece 1000 DN600 (24")**  
With DN200 (8") contact surface, incl. profile seal, length 1000 mm (3' 3.4"), 750 mm (2' 5.5"), 500 mm (1' 7.7")

Order no. 371015

**Infiltration connecting piece 1000 DN600 (24")**  
With DN200 (8") pipe connections, incl. profile seal, length 1000 mm (3' 3.4"), 750 mm (2' 5.5"), 500 mm (1' 7.7")

Order no. 371016

**Infiltration distributor module DN 600 (24")**  
Incl. profile seal for infiltration connecting piece and/or inlet module; 2 x DN160 (6") / DN200 (8") connections; mounting surface for connections of up to DN200 (8")

Order no. 330361

**SHAFTS COVERS**  
**>> page 58/59**

**Individual components**

**Infiltration inlet module DN400 (16")**  
Incl. profile seal for telescopic dome shaft; DN160 (6") / DN200 (8") connections

Order no. 330339

**Infiltration filter basket DN400 (16")**  
Mesh width 0.35 mm (0.01")

Order no. 340524

**Infiltration connecting piece DN400 (16")**  
To produce greater installation depths, effective length: 500 mm (1' 7.7"), can be shortened to 250 mm (9.8")

Order no. 330341

**Infiltration distributor module DN400 (16")**  
Incl. profile seal for infiltration connecting piece and/or inlet module; 2 x DN160 (6") connections; mounting surface for connections of up to DN160 (6")

Order no. 330340

**SHAFTS COVERS**  
**>> page 58/59**

# External filters



## Infiltration filter shaft

- 3-stage cleaning process
  - ① Coarse filter insert
  - ② Fine filter basket (0.35 mm (0.01") mesh width)
  - ③ Sedimentation zone
- Retains contaminants which may affect infiltration performance
- Ideal as a courtyard inlet structure or a trough-trench overflow element
- Suitable for vehicle loading with cast cover, class B
- Continuously variable installation depth of 600 – 1050 mm (24" – 3' 5.3") using the telescopic dome shaft diameter 400 mm (16")
- Maximum flow rate of 16 l/s (4.2 US gal./s)

### Connection surface

④ Outlet	DN110 (4") / DN160 (6")	330 – 780 mm (13" - 30.7")
----------	-------------------------	----------------------------

All measurements from pipe bottom to top edge of ground

Q WEBCODE G4401



## Infiltration filter shaft XL

- 2-stage cleaning process
  - ① Dirt trap
  - ② Sedimentation zone
- Ideal as a courtyard inlet structure or a trough-trench overflow element
- Continuously variable installation depth of 855 – 1385 mm (33.7" – 4' 6.5") using the telescopic dome shaft diameter 600 mm (24")
- Maximum flow rate of 30 l/s (7.9 US gal./s)

### Connection surface

③ Outlet	DN160 (6") / DN200 (8")	585 – 1155 mm (1' 11" - 3' 9.5")
----------	-------------------------	----------------------------------

All measurements from pipe bottom to top edge of ground

Q WEBCODE G4406



## Drainstar filter external

- No height loss between inlet and outlet
- Filter insert with mesh width of 0.35 mm (0.01")
- Continuously variable installation depth of 600–1050 mm (23.6"– 3' 5.3") using telescopic dome shaft
- Ideally suited to infiltration and pond systems
- Maximum flow rate of 16 l/s (4.2 US gal./s)

### Drainstar filter external suitable for pedestrian loading

With plastic cover, childproof

Order no. 340143

### Drainstar filter external suitable for vehicle loading

With cast cover, class B

Order no. 340144

### Connection surface

① Inlet	DN110 (4") / DN160 (6")	330 – 780 mm (13" – 30.7")
② Outlet	DN110 (4")	330 – 780 mm (13" – 30.7")

All measurements from pipe bottom to top edge of ground

Q WEBCODE G4405



## Drainstar filter XL external

- No height loss between inlet and outlet
- Filter insert with mesh width of 0.75 mm (0.03")
- Continuously variable installation depth of 820–1370 mm (2' 8.3" – 4' 5.9") using telescopic dome shaft
- Maximum flow rate of 30 l/s (7.9 US gal./s)

### Drainstar filter XL external suitable for pedestrian loading

Order no. 340156

### Drainstar filter XL external suitable for vehicle loading

Order no. 340157

### Connection surface

① Inlet	DN200 (8") / DN250 (10")	510/520 – 1060/1070 mm (20" – 3' 6")
② Outlet	DN200 (8") / DN250 (10")	510/520 – 1060/1070 mm (20" – 3' 6")

All measurements from pipe bottom to top edge of ground

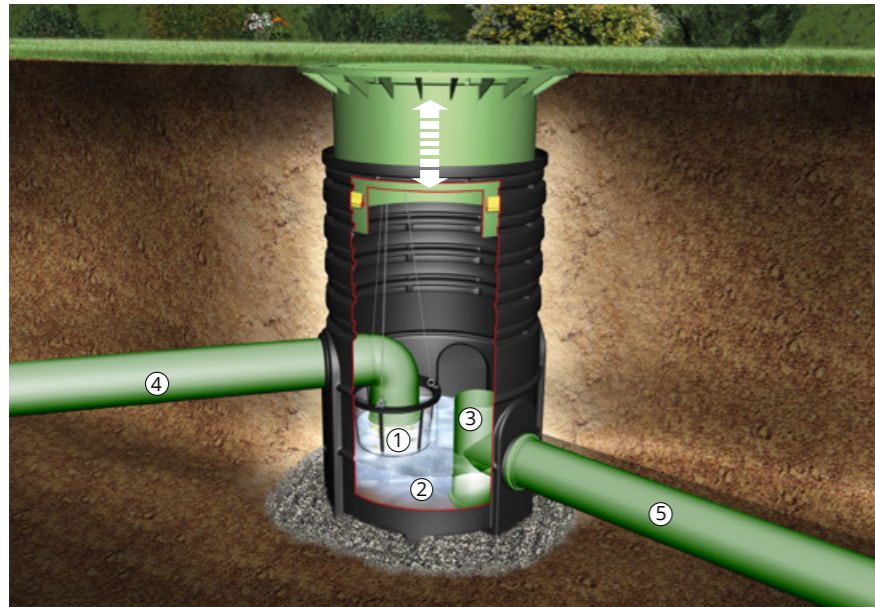
Q WEBCODE G4408

### Drainstar filter XL external suitable for lorry-bearing\*

Order no. 340158

\*Cover and compensating ring provided on site

# External filters



## Sedimentation filter shaft

- 3-stage cleaning process
  - ① Fine filter basket (0.35 mm (0.01") mesh width)
  - ② Sedimentation zone
  - ③ Submerged pipe as oil separator
- Low installation depth from 1000 - 1500 mm (3' 3.4" - 4' 11.1") using telescopic dome shaft
- Cover has child-proof lock
- Sealed up to ground level
- Maximum flow rate of 16 l/s (4.2 US gal./s)

**Sedimentation filter shaft**  
suitable for pedestrian loading

Order no. 340026

suitable for vehicle loading

Order no. 340027

### Connection surface

④ Inlet	DN160 (6")	560 - 1060 mm (1' 10" - 3' 5.7")
⑤ Outlet	DN160 (6")	810 - 1310 mm (2' 7.9" - 4' 3.6")

All measurements from pipe bottom to top edge of ground

[Q WEBCODE G4402](#)



## Saphir universal shaft

- Suitable as universal, control, inspection, sedimentation, pump, or lifting shaft
- Numerous connection options for simple installation
- Simple transport thanks to low weight
- Lifting rings for simple handling and depositing in the construction pit
- Sealed up to ground level
- Suitable for vehicle load (3.5 t)

Volume [l]	Ø	Height	Order no.
600 (160 US gal.)	1125 mm (3' 8.3")	1045 mm (3' 5.1")	330455
900 (240 US gal.)	1155 mm (3' 9.5")	1345 mm (4' 5.0")	330456
1.200 (315 US gal.)	1155 mm (3' 9.5")	1670 mm (5' 5.7")	330457

[Q WEBCODE G9304](#)

# Optimax XXL Filter

- Water yield of over 95 %
- Self-cleaning filter principle
- Stainless steel filter insert with mesh width of 0.35 mm (0.01")
- Maximum flow rate of 100 l/s (26.4 US gal./s) with DN315 (12") connection and 200 l/s (52.8 US gal./s) with DN400 (16") connection
- Patented filter technology
- Larger connections on request
- Includes cleaning unit
- Height loss of just 45 mm (1.8") between inlet and dirty water outlet

[Q WEBCODE G2207](#)

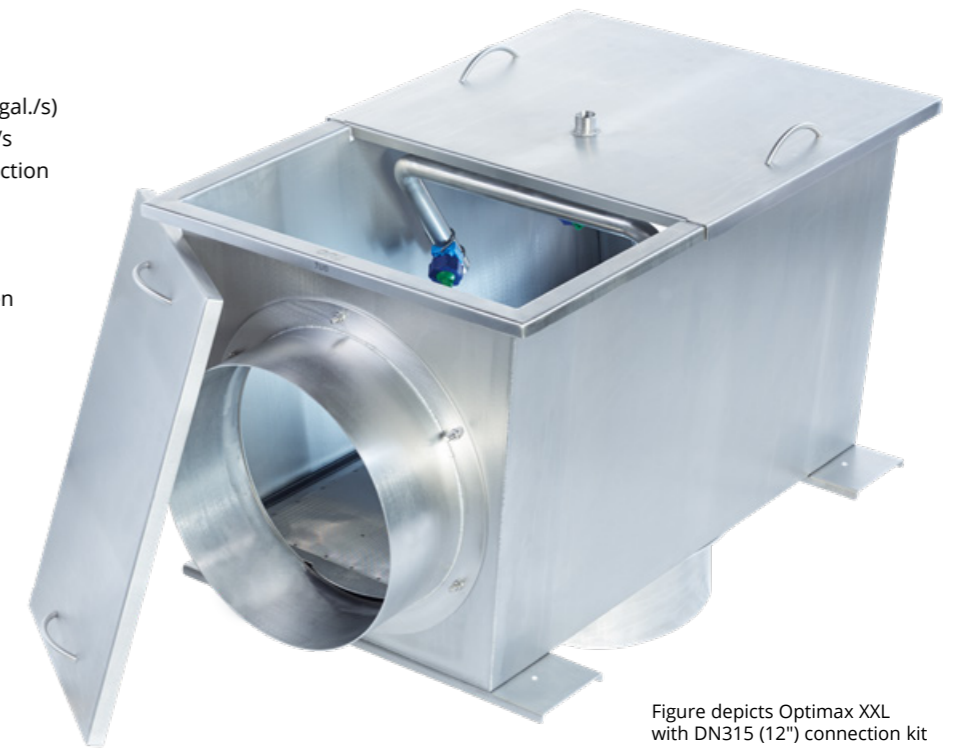


Figure depicts Optimax XXL with DN315 (12") connection kit

## Optimax XXL Filter external

Width	Length	Height	Order no.
675 mm (26.6")	1125 mm (3' 8.3")	770 mm (30.3")	340096

## Accessories

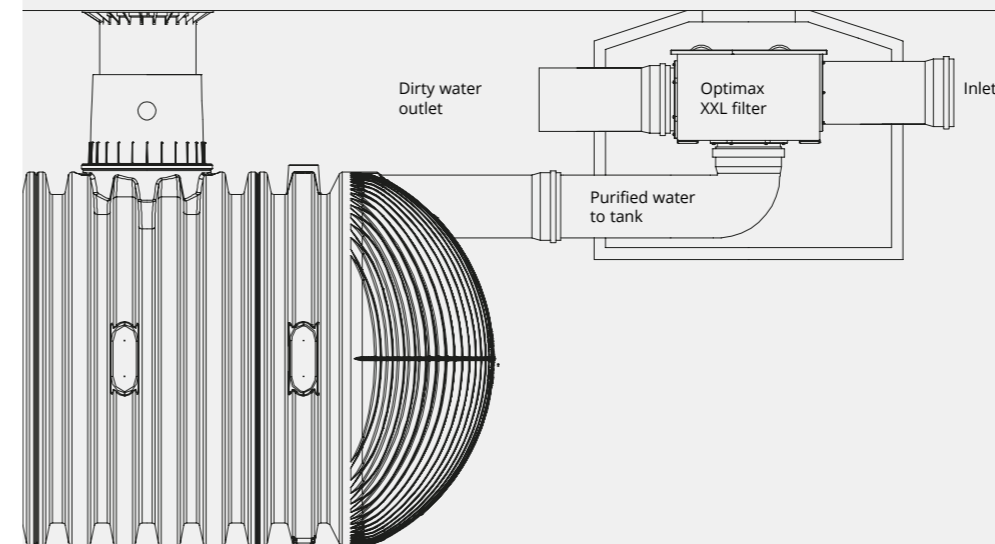
### Connection kit DN315 (12")

Order no. 340097

### Connection kit DN400 (16")

Order no. 340099

## Example installation\*



\*Simplified representation

## Including filter cleaning unit

Consisting of four adjustable flat jet nozzles with a very powerful water jet to clean the filter screen. This means fewer maintenance intervals. Automatic control possible with Aqua Center Silentio.



How the filter cleaning unit works

# EcoPure 200 - stormwater treatment system

with GRAF PureSorp media

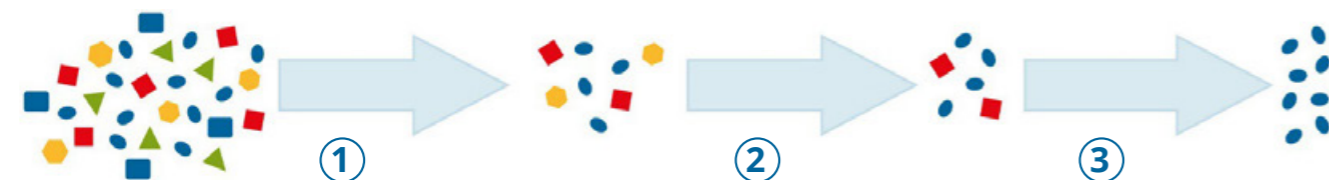
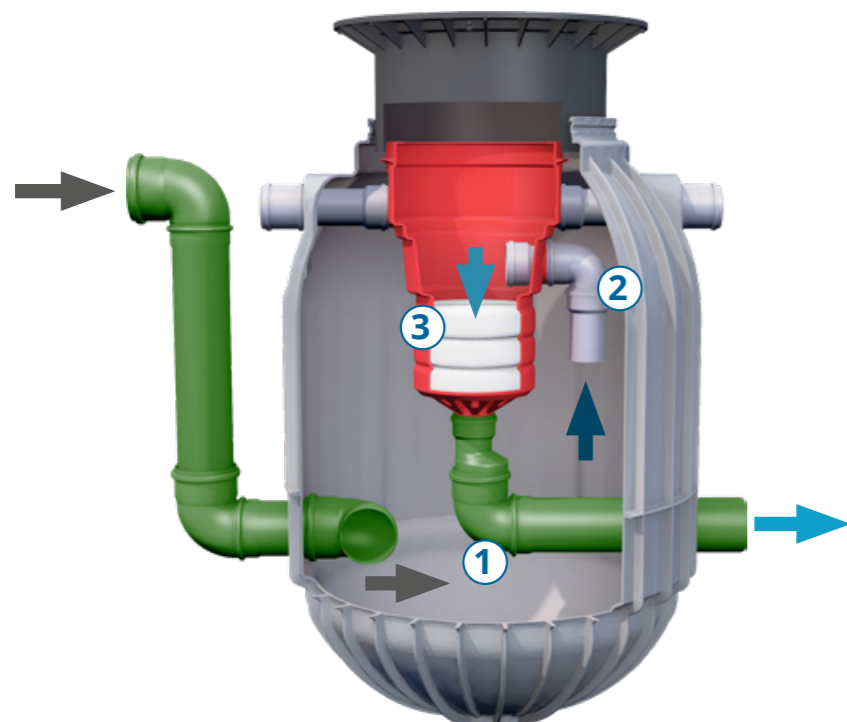
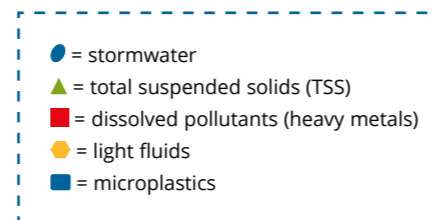
Volume [l] (315 US gal.)	Connection options [mm] (6")	Max. flow rate [l/s] (0.53 US gal./s)	Order no.
1,200	DN160 (6")	2.0	340155

- ✓ German certification for the treatment of stormwater from roads with heavy traffic
- ✓ Consistently high efficiency due to the desiccation of the filter media after the rain event
- ✓ Easy installation due to the delivery of the fully assembled system
- ✓ Easy maintenance and easy replacement of the filter media without heavy equipment
- ✓ Lorry bearing in combination with load distribution plate

Q WEBCODE G4407

## How does the GRAF EcoPure 200 work?

- ① Hydrodynamic separation
- ② Light fluid separation
- ③ Adsorption through the PureSorp filter media



GRAF EcoPure 200 was tested in Germany according to the worldwide highest requirements. It has a German DIBt certification that is valid for the treatment of stormwater from roads with heavy traffic.



## GRAF PureSorp filter media

- TSS, copper and zinc removal
- DIBt certified
- Easy replacement of the filter media without heavy equipment

### Replacement Set (3 pcs):

Order no. 231010

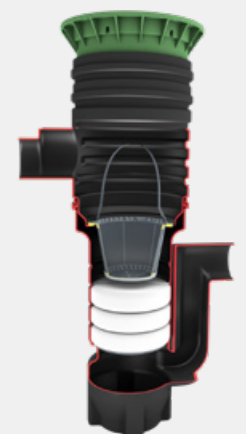


## EcoPure 180

External filter shaft with certified GRAF PureSorp filter media. Used in combination with an upstream sedimentation tank as a sedimentation unit.

Connection options [mm]	Max. Flow rate [l/s] (0.48 US gal./s)	Order no. pedestrian loading	Order no. vehicle loading
DN160 (6")	1.8	340110	340160

Q WEBCODE G4403



# Accessories DN600

## Covers

### Telescopic dome shaft mini / maxi

With PE cover, suitable for pedestrian loading  
colour: grass green



Mini	Order no. 371010
Maxi	Order no. 371011

### Telescopic dome shaft cast iron

With cast iron cover, suitable for vehicle  
loading max. load 3.5 t, colour: black



Order no. 371020

### Telescopic dome shaft lorry

Suitable for vehicle/lorry-bearing for  
commercially available concrete rings / covers

compensation ring  
and manhole cover  
not included



Order no. 371021

### Telescopic dome shaft 600 (24") car

Suitable for vehicle loading - with childproof  
plastic cover class B



Order no. 371052

## Individual components

### Infiltration filter strainer DN600 (24")

Made from stainless steel,  
mesh width 0.75 mm (0.03")



Order no. 340523

### Infiltration inlet module DN600 (24")

Incl. profile seal for telescopic dome shaft;  
DN160 (6") / DN200 (8") / DN250 (10")  
/DN315 (12") connection



Order no. 330360

### Infiltration connecting piece 1000 DN600 (24")

With DN200 (8") contact surface, incl. profile seal,  
length 1000 mm (3' 3.4"), 750 mm (2' 5.5"),  
500 mm (1' 7.7")



Order no. 371015

### Infiltration connecting piece 1000 DN600 (24")

With DN200 (8") pipe connections,  
incl. profile seal, length 1000 mm (3' 3.4"),  
750 mm (2' 5.5"), 500 mm (1' 7.7")



Order no. 371016

### Infiltration connecting piece 300 DN600 (24")

Incl. profile seal, length 300 mm (11.8")



Order no. 371003

# Accessories DN400



## Covers

### Telescopic dome shaft 400 (16")

With PE cover, suitable for  
pedestrian loading, colour: grass green



Order no. 340053

### Telescopic dome shaft 400 (16")

With cast iron cover, suitable for  
vehicle loading max. load 3.5 t, colour: black



Order no. 340054

### Telescopic dome shaft 400 (16") lorry

With cast iron cover,  
lorry-bearing, colour: black



Order no. 340049

### Telescopic filter shaft 400 (16")

With slotted cast iron cover, suitable for  
vehicle loading max. load 3.5 t, incl. coarse filter  
insert and fine filter basket (0.35 mm (0.01")  
mesh width), colour: black



Order no. 340126

## Individual components

### Infiltration filter basket DN400 (16")

Mesh width 0.35 mm (0.01")



Order no. 340524

### Infiltration inlet module DN400 (16")

Incl. profile seal for telescopic dome shaft;  
DN160 (6") / DN200 (8") connections



Order no. 330339

### Infiltration connecting piece DN400 (16")

To produce greater installation depths,  
effective length: 500 mm (19.7"), can be  
shortened to 250 mm (9.8")



Order no. 330341

# for a greener planet

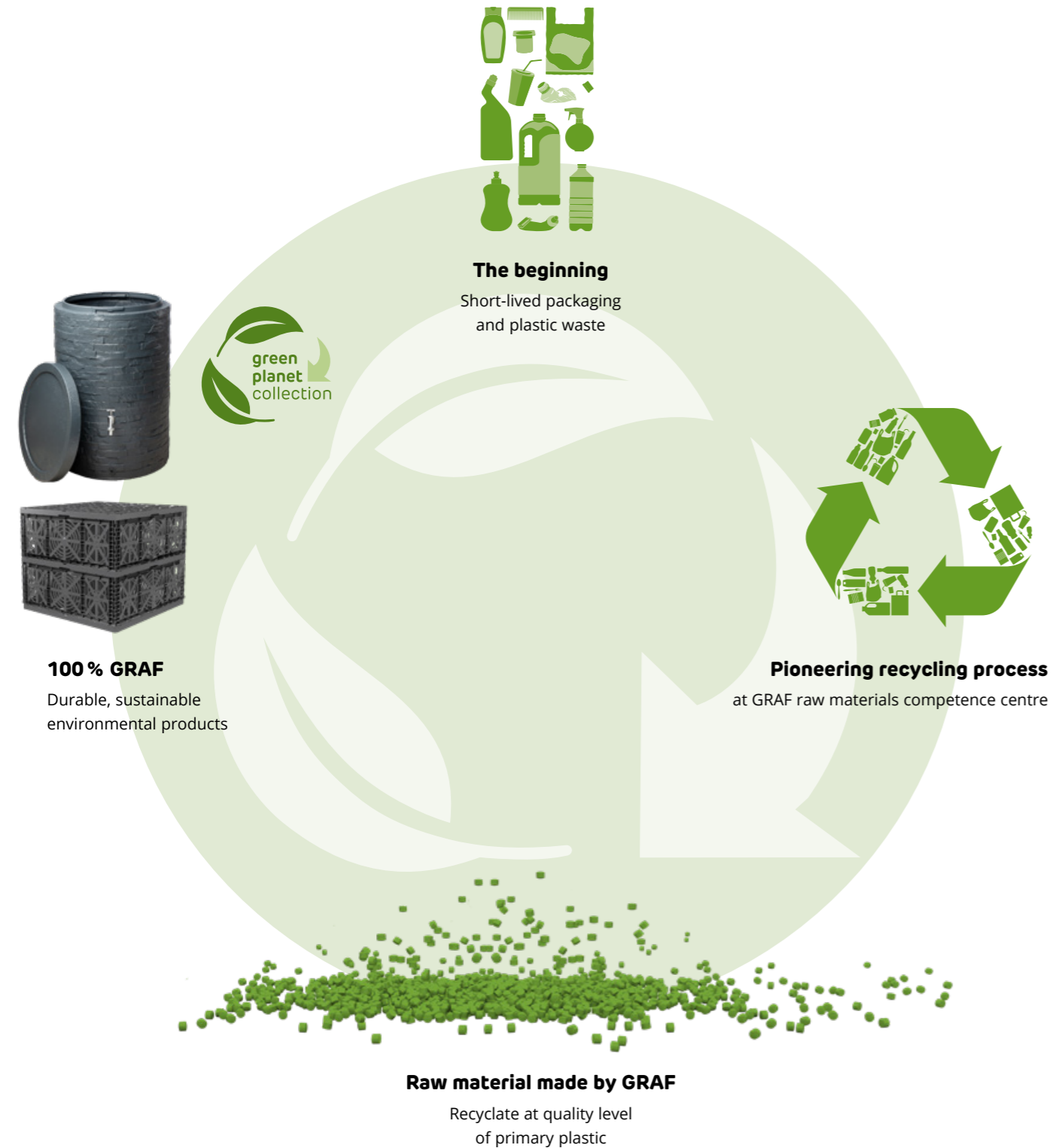
Climate change. Our world is currently facing huge challenges. In these times, we need role models. Inspirers who not only preach sustainability, but also put it into practice. Just as we at GRAF are already making an important contribution. After all, it's not just our solutions for rainwater management and other water-related applications that are sustainable through and through. The recycling plastic from which we manufacture our products is also sustainable.

For example, we turn short-lived food packaging into an EcoBloc infiltration module that lasts for generations. This is how we can make our cities a little safer against increasing heavy rainfall events. Or rainwater tanks that allow us to water our gardens with a clear conscience, even during hot spells. Quite incidentally recycling saves us about 100,000 tonnes of CO<sub>2</sub> every year – as much as more than 60,000 cars emit.

By the way: we recycle our products ourselves. Our raw materials competence centre makes us unique. It is our heart, which not only contains all our innovative power, but also our lifeblood. For a better world for all of us – for a greener planet.



# The GRAF recycling cycle



## This is us

The whole world is talking about sustainability. For us, it has long been a natural part of our DNA. We recognized the potential of rainwater early on: „Rainwater is free“ was one of our first campaigns back in the 1970s. Rain barrels were produced in our family business as early as 1974. The first underground tanks for rainwater harvesting followed just four years later. GRAF rain barrels have been made from recycled material since 1980. By the way, rainwater is still free of charge. But in times of climate change, drought and heavy rain, sustainable water management is much more than that: it is a valuable contribution to our future.

## For this we stand

**75 %**  
share of recycling material

**Environmental products for SUSTAINABLE**  
water management

**100,000 TONNES CO<sub>2</sub> savings**  
every year as much as more than  
60,000 cars emit

**LONG SERVICE LIFE**  
and spare parts supply

**Recycling material**  
**FREE FROM POLLUTANTS**

**80 % share of renewable**  
energies in production

**Products**  
**FULLY RECYCLABLE**

**State-of-the-art production**  
facilities for **LOW ENERGY**  
**CONSUMPTION**

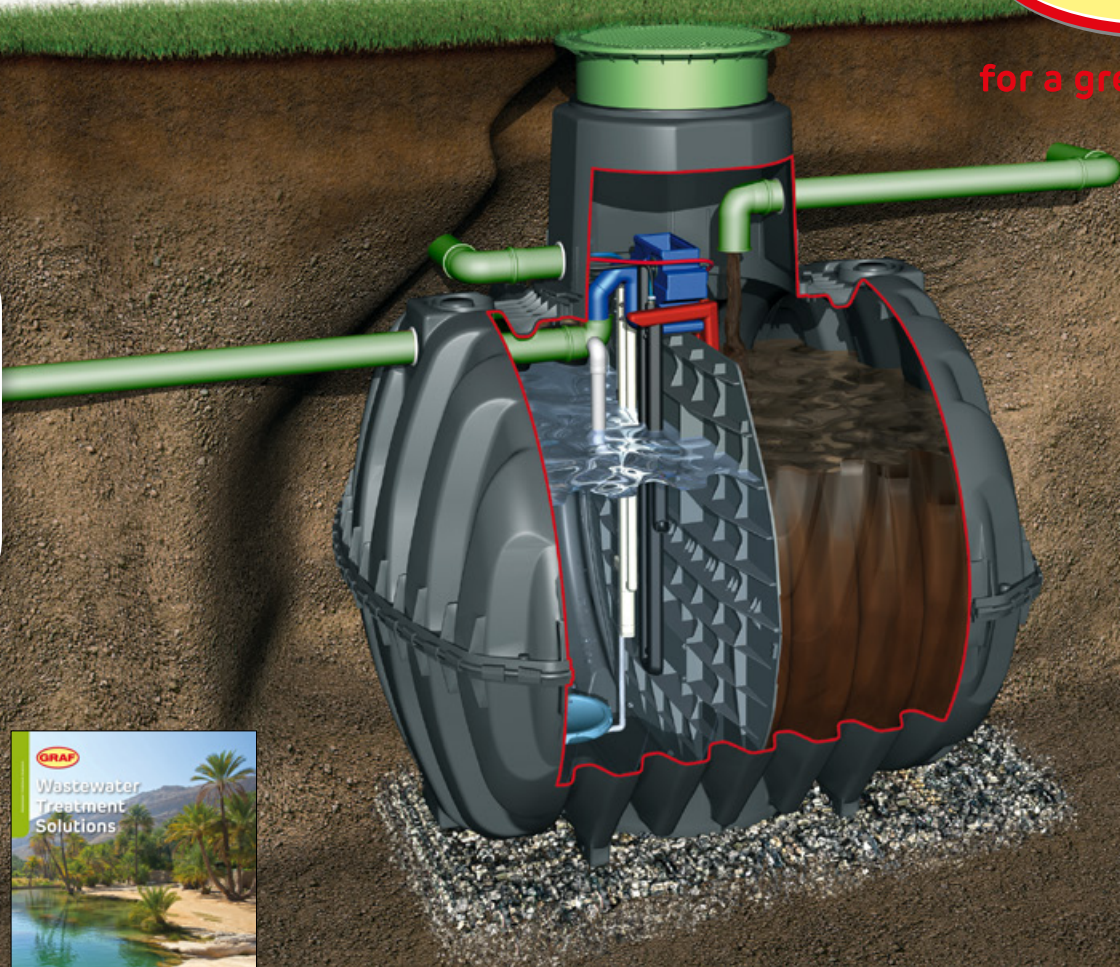
For further information see:  
[www.graf.info/sustainability](http://www.graf.info/sustainability)







for a greener planet



Wastewater Treatment Solutions  
Further details on wastewater treatment and separators for grease and oil can be found in our "Wastewater Treatment Solutions" range catalogue.

Please note:  
Information on all products and systems in this brochure is subject to changes and errors.

Pictures and photographs are approximate only.

The applicable technical documentation for the products shall control, which we will be happy to send you on request.

All offers, deliveries and services are subject to our general terms and conditions, which we will also be happy to send you.

GRAF worldwide please visit  
[www.graf.info](http://www.graf.info)

**RAINWATER HARVESTING** 

**STORMWATER MANAGEMENT** 

**WASTEWATER TREATMENT SOLUTIONS** 

**SEPARATORS** 

**GARDEN PRODUCTS & MULTI-PURPOSE CONTAINERS** 

Otto Graf GmbH  
Kunststofferzeugnisse  
Carl-Zeiss-Straße 2 – 6  
DE-79331 Teningen

Tel.: +49 7641 589-0  
Fax: +49 7641 589-50  
export@graf.info

© Otto Graf GmbH/Order no. 960288/EN

