



# Revit Families

MANUAL HANDLING  
UNDERGROUND TANK CARAT  
+ ACCESSORIES



# GENERAL

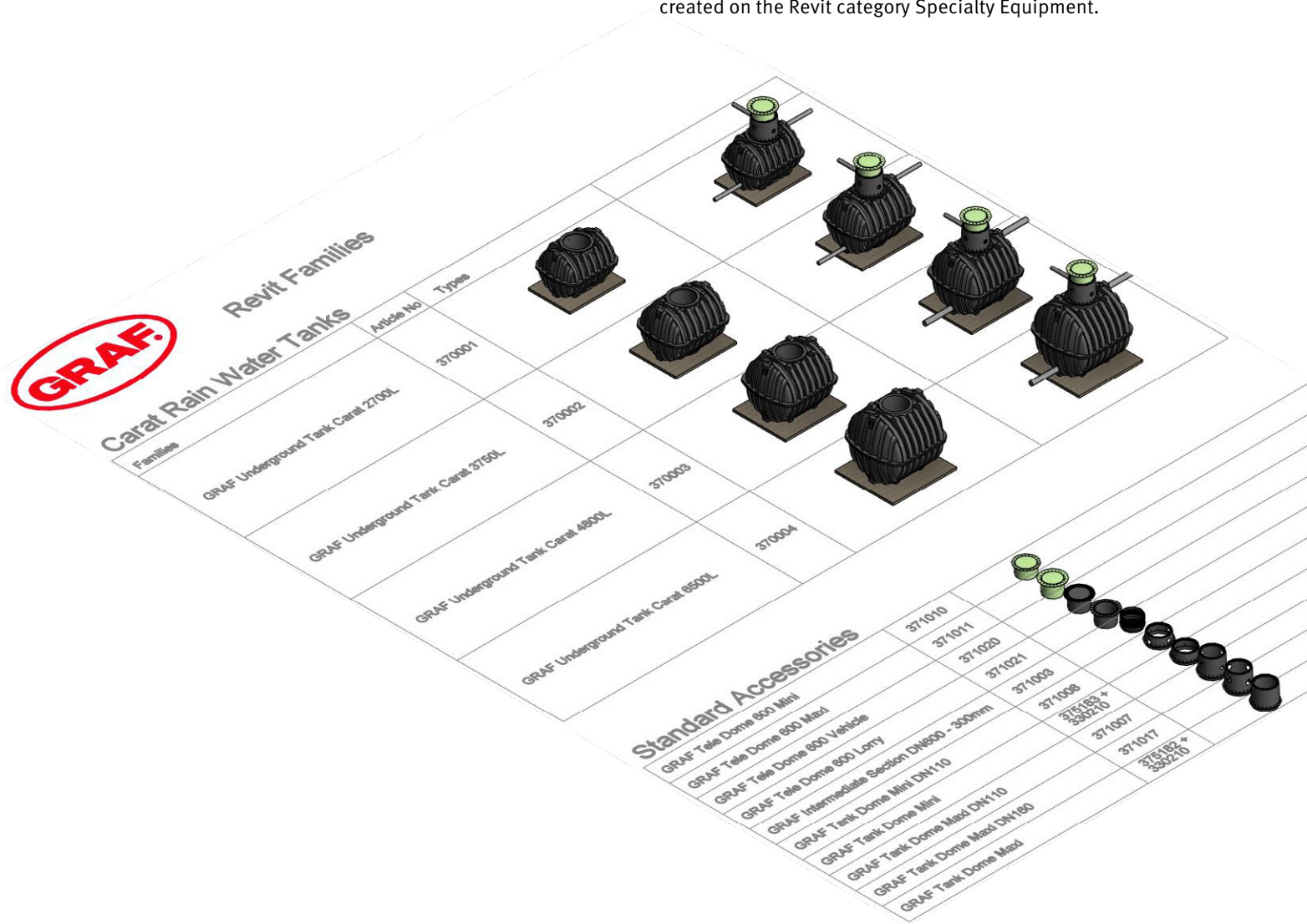
## REVIT Underground Tank Carat + Accessories

### Revit Version

The GRAF Revit Families are created in the english version of Revit 2018.

### Revit Project

The Revit project **GRAF\_Underground\_Tank\_Carat\_Family\_+\_standard\_Accessories.rvt** contains all tank and standard accessories families of the Carat series. The families are created on the Revit category Specialty Equipment.



### How to add the families to your project

1. Open your Revit project.
2. Open the **GRAF\_Underground\_Tank\_Carat\_Family\_+\_standard\_Accessories.rvt**
3. In this project, select a family.
4. In the Modify menu run Edit Family. This opens the Family Editor.
5. From here, run Load into Project (or Load into Project and Close) and select your project.  
The family is available now in the project browser of your project under Families > Specialty Equipment.  
The family types can be dragged into your drawing area.
6. You can close the family you have opened. You do not need to save it, as all families and types are still available in the **GRAF\_Underground\_Tank\_Carat\_Family\_+\_standard\_Accessories.rvt**

*Alternatively, use Insert > Load Family to load the downloaded single families directly in your project.  
In this case, you do not need to open the overview project.*

### Correct planning

For correct planning, the information in the product-specific installation instructions must be observed.

### Detail Levels

The GRAF families support the Revit detail levels Coarse, Medium and Fine.



**coarse**



**medium**

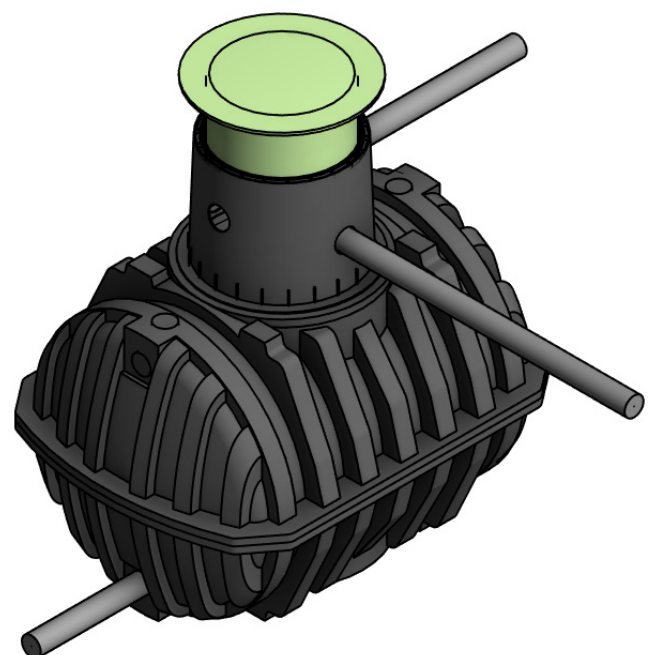
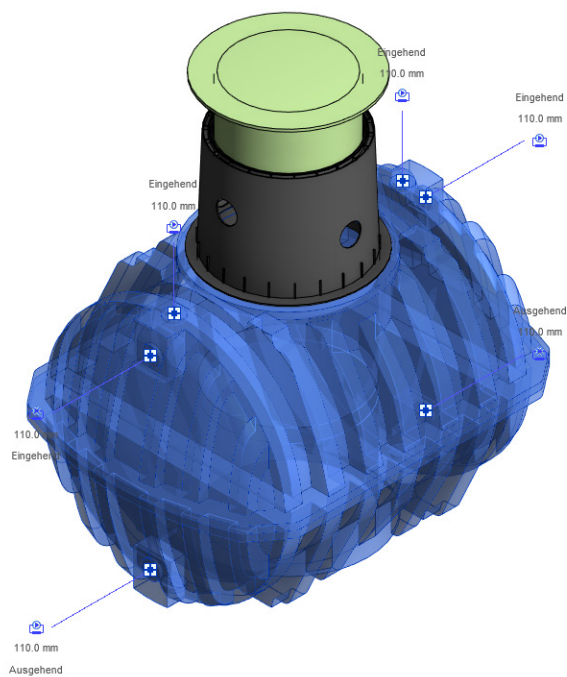


**fine**

### Connectors

Piping systems can be designed using the connectors on the tanks and accessories.

### Underground Tank Carat

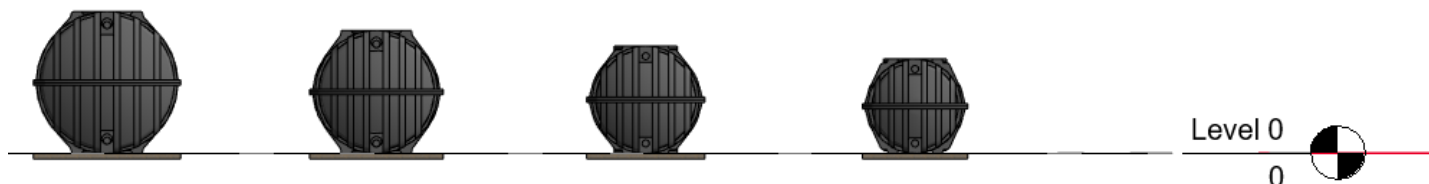


# PROPERTIES

## REVIT Underground Tank Carat + Accessories

### Base of the families

The base points in the families are in x/y-direction the center, in z-direction on the bottom edge for the tanks, for accessories based on the usage of the families.

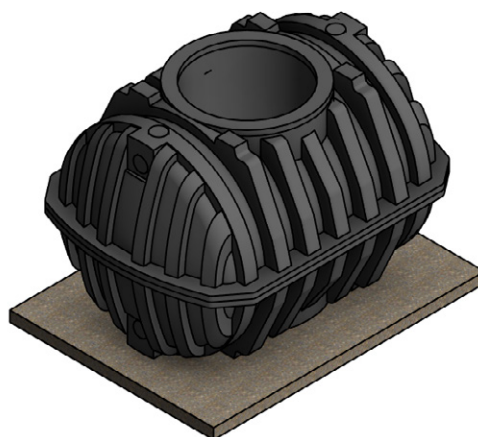


### Show Gravel

Defines the visibility of the gravel layer below the tank. This is displayed with 80 mm below the base-point of the model.



Konstruktion		⬆
Show Gravel	<input type="checkbox"/>	<input type="checkbox"/>



Konstruktion		⬆
Show Gravel	<input checked="" type="checkbox"/>	<input type="checkbox"/>

## GRAF Specialty Equipment Schedule

A	B	C	D	E	F	G	H	I	J	K
Count	Family	Type	Model	Article Number	Material Description	Max. Load	Connection Surfaces	Length	Width	Height
1	GRAF Underground Tank Carat 2700L	Carat 2700L	Underground Tank Carat 2700L	370001	PP	12 t	6xDN110	2080	1565	1400
1	GRAF Underground Tank Carat 3750L	Carat 3750L	Underground Tank Carat 3750L	370002	PP	12 t	6xDN110	2280	1755	1590
1	GRAF Underground Tank Carat 4800L	Carat 4800L	Underground Tank Carat 4800L	370003	PP	12 t	6xDN110 / 6xDN160	2280	1985	1820
1	GRAF Underground Tank Carat 6500L	Carat 6500L	Underground Tank Carat 6500L	370004	PP	12 t	6xDN110 / 6xDN160	2390	2190	2100





For more information about our Stormwater Management, Rainwater Harvesting or Wastewater Treatment, ask for our technical catalogue.